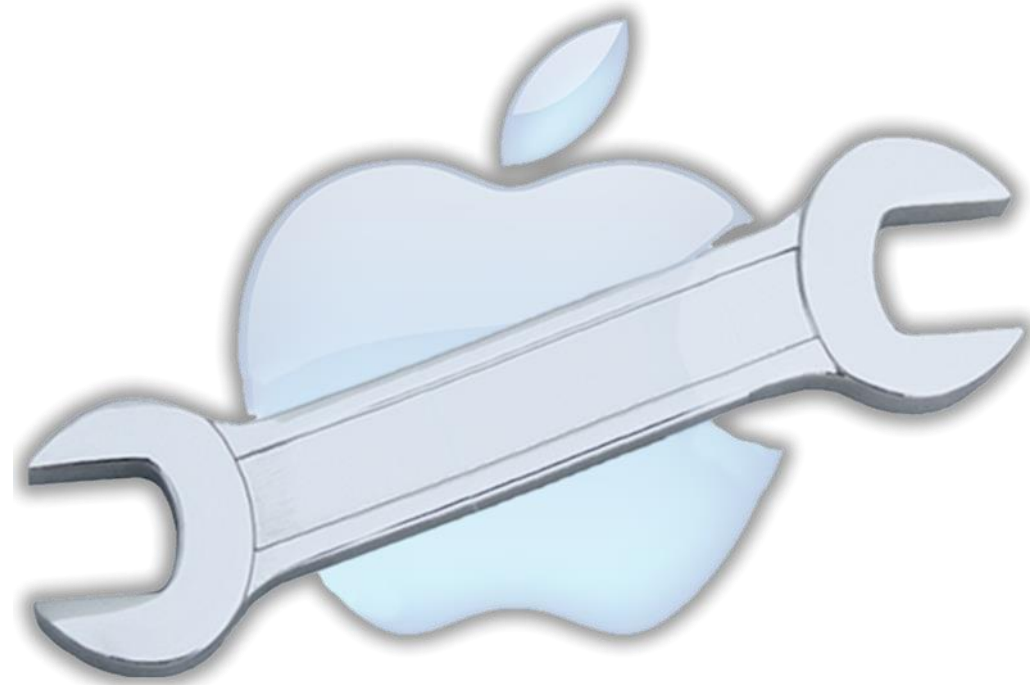


Force DFU Mode



Agora é possível forçar os iDevices a entrar em Force DFU!

17/08/2021

Force DFU Mode

O que é FORCE DFU?

É efetuar o test point nos pontos indicados para que o aparelho seja forçado a reconhecer em DFU mode, mesmo se ele não reconheça no modo normal de acessar DFU, condições ideais para forçar a entrada em Force DFU:

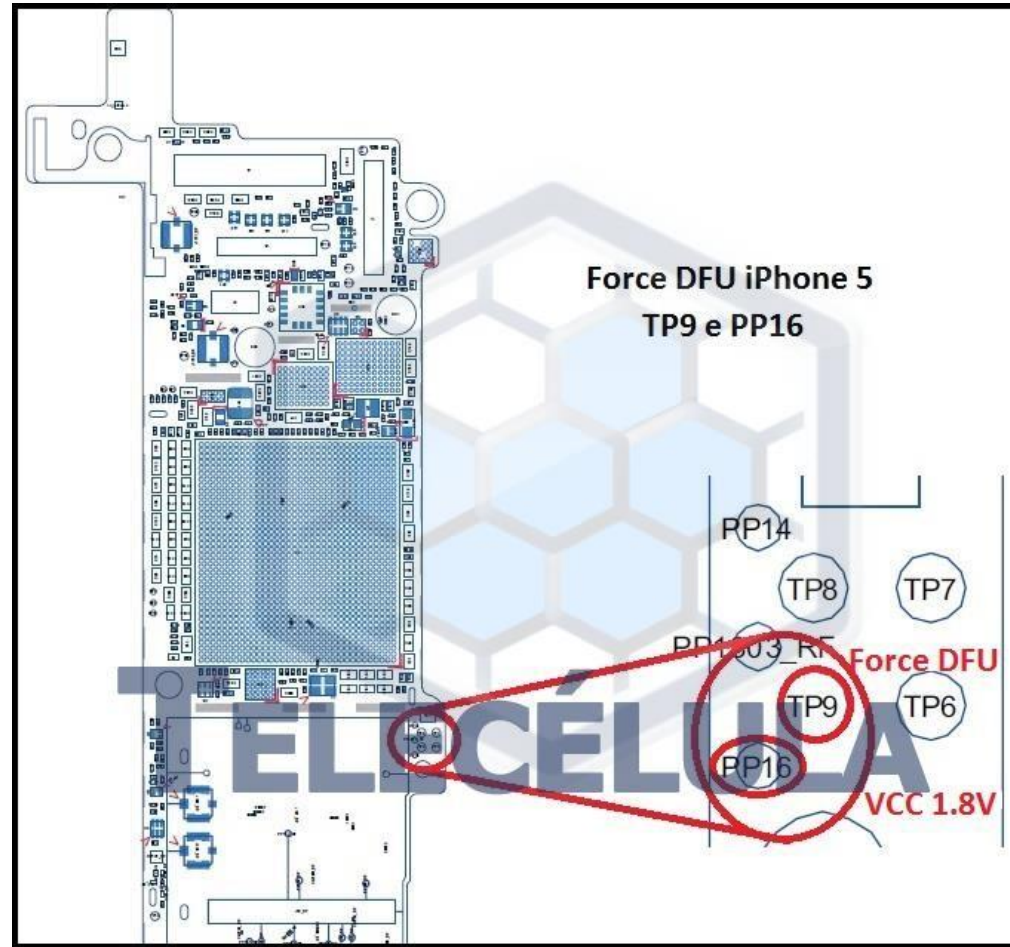
1. Não liga com baixo consumo ao pressionar pwr.
2. Não acessa modo DFU pelos botões.
3. Não é reconhecido em nenhum modo pelos botões.

Force DFU Mode

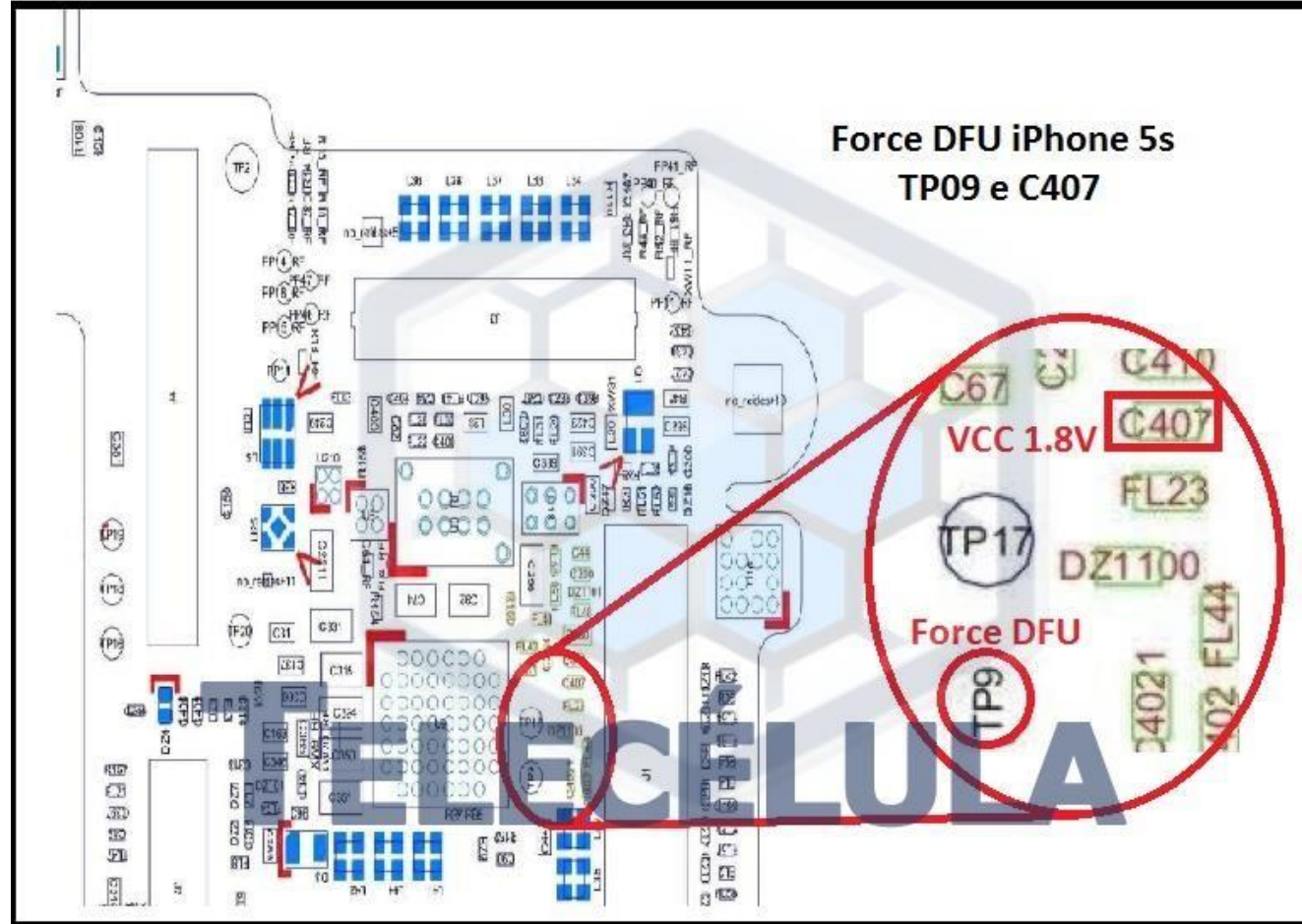
Como fazer o modo FORCE DFU?

1. Fechar os pontos indicados nos slides a seguir, um ponto ao outro (pinça ou jumper). Obs: placa desmontada sem energização.
2. Conectar o aparelho na alimentação (bateria) e conectar o cabo de dados ligado ao computador.
3. Ao reconhecer em modo DFU, desconectar o test point e prosseguir com a restauração normalmente.

Force DFU iPhone 5

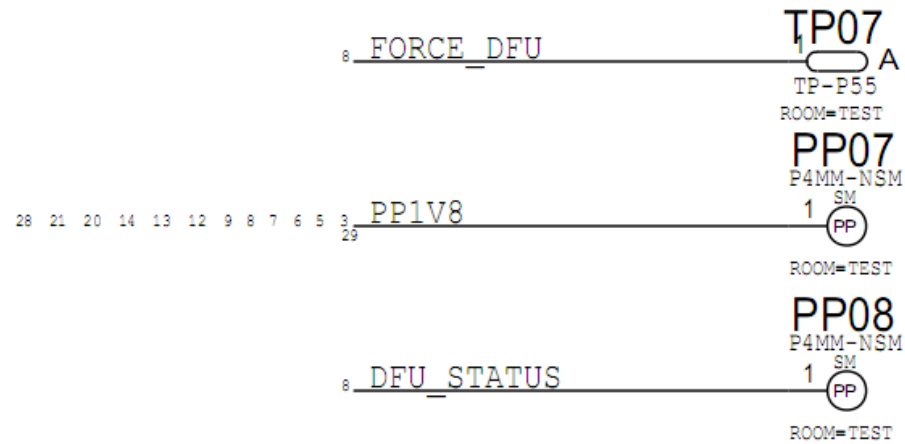


Force DFU iPhone 5S



Force DFU iPhone SE

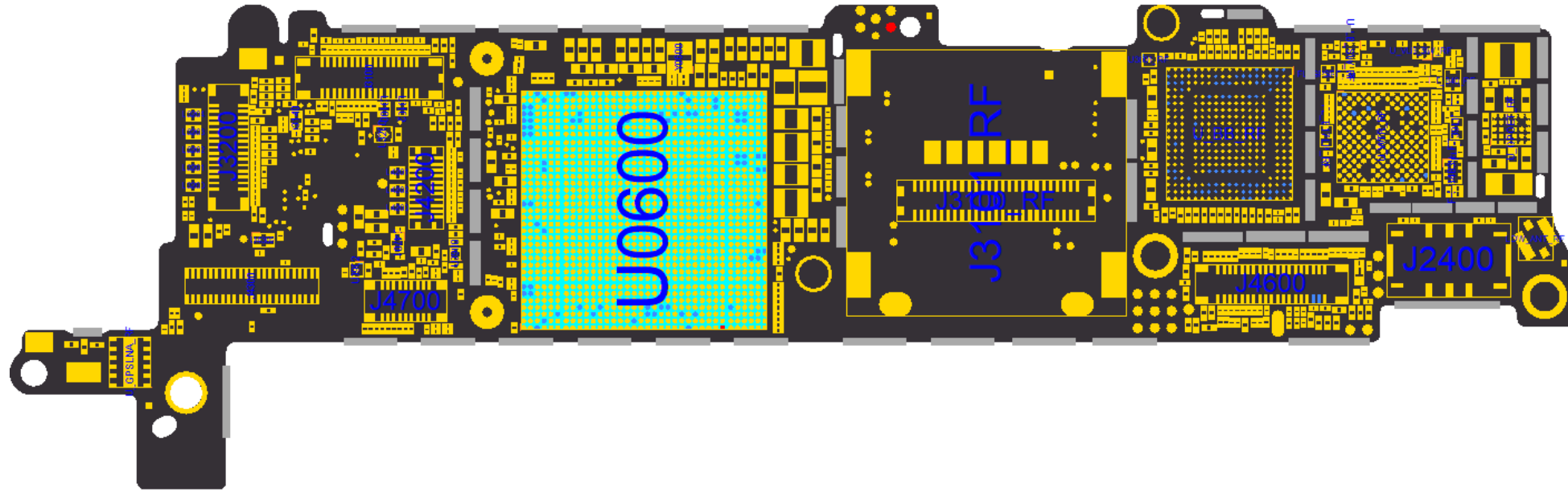
DFU



FORCE DFU PROCEDURE:

1. FROM OFF MODE SHORT TP07 TO PP07
2. PLUG IN E75 CABLE TO FORCE DFU

Force DFU iPhone SE



APPLE IPHONE SE

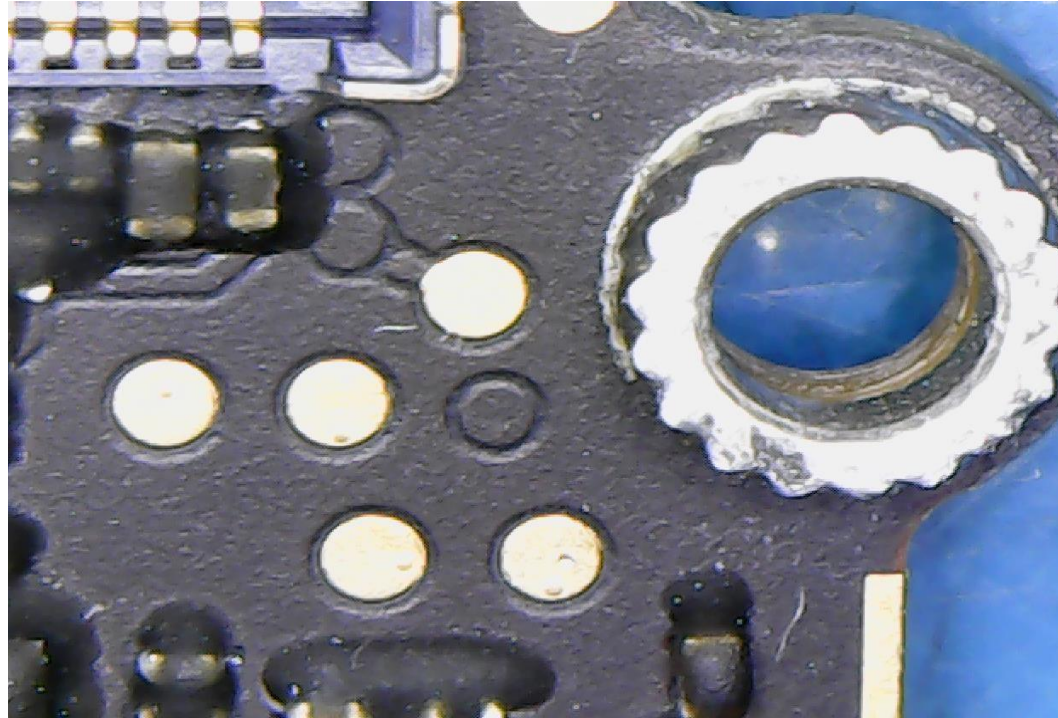
FORCE DFU



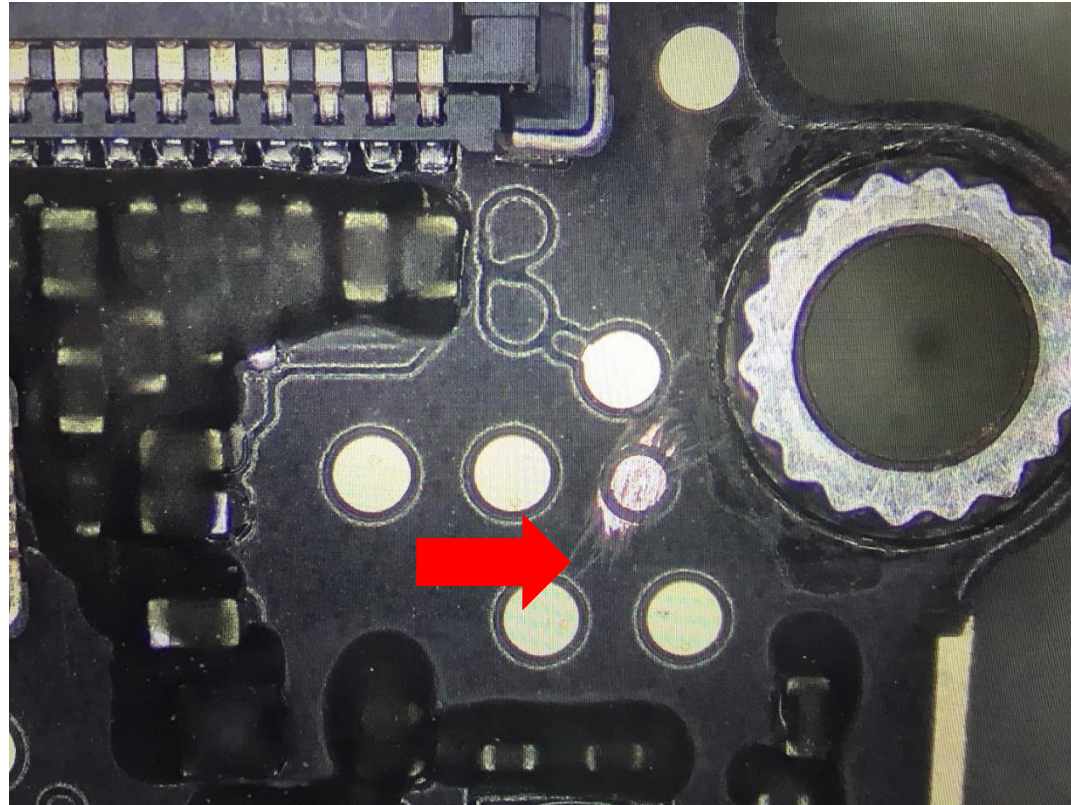
820-3141-C



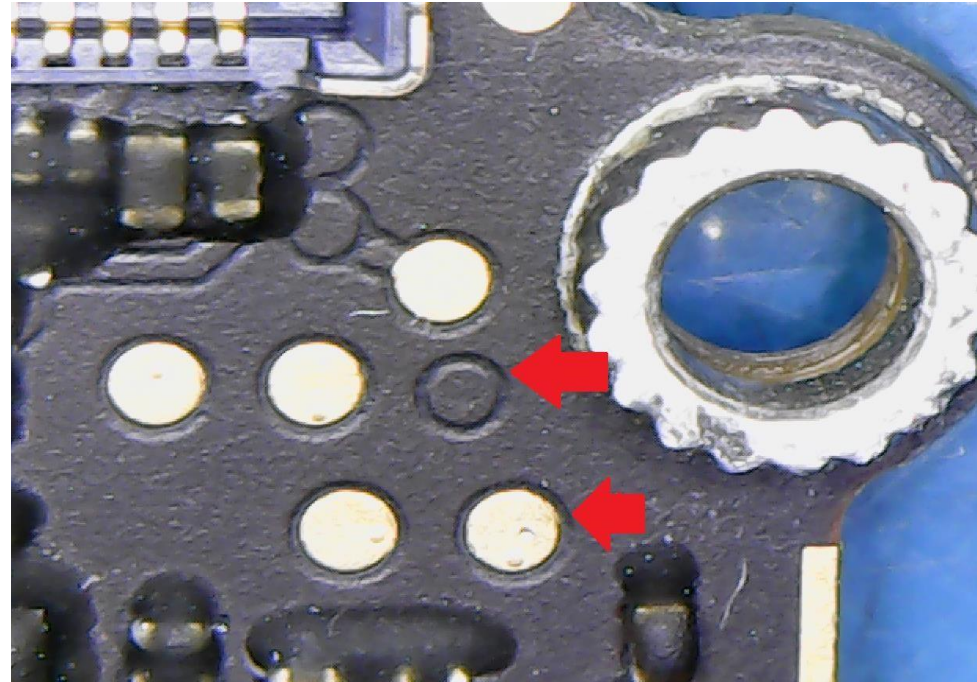
Force DFU iPhone 6 PCB



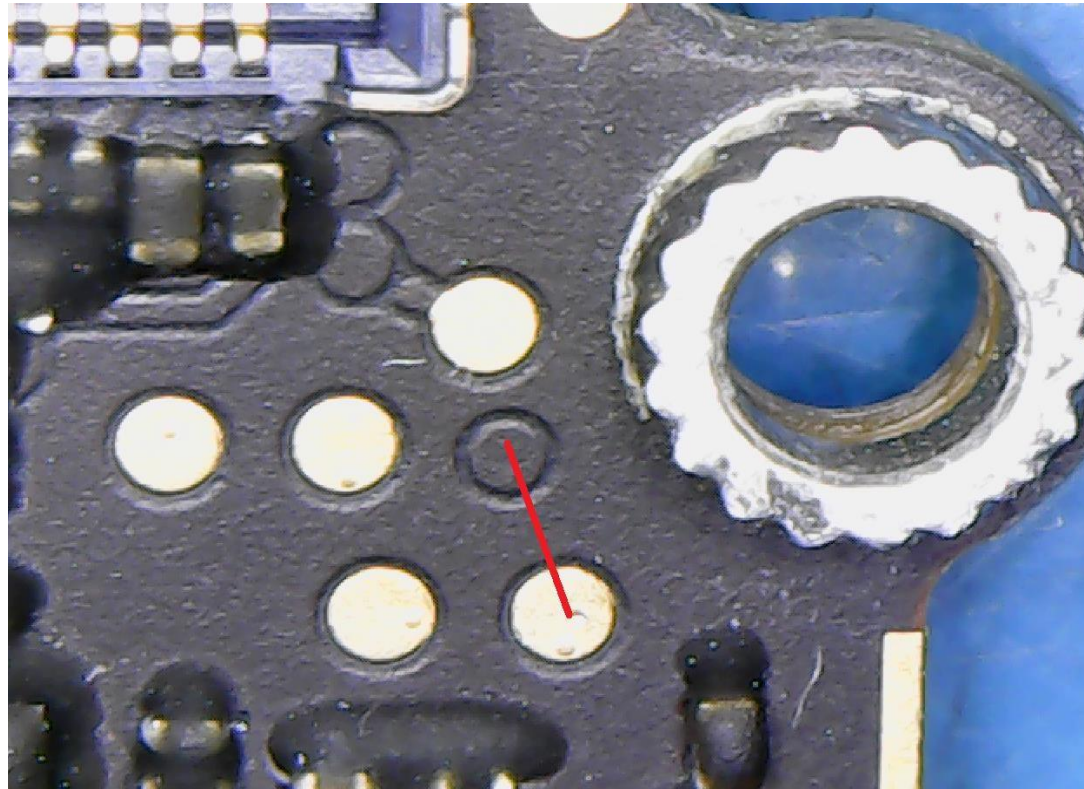
Force DFU iPhone 6 PCB



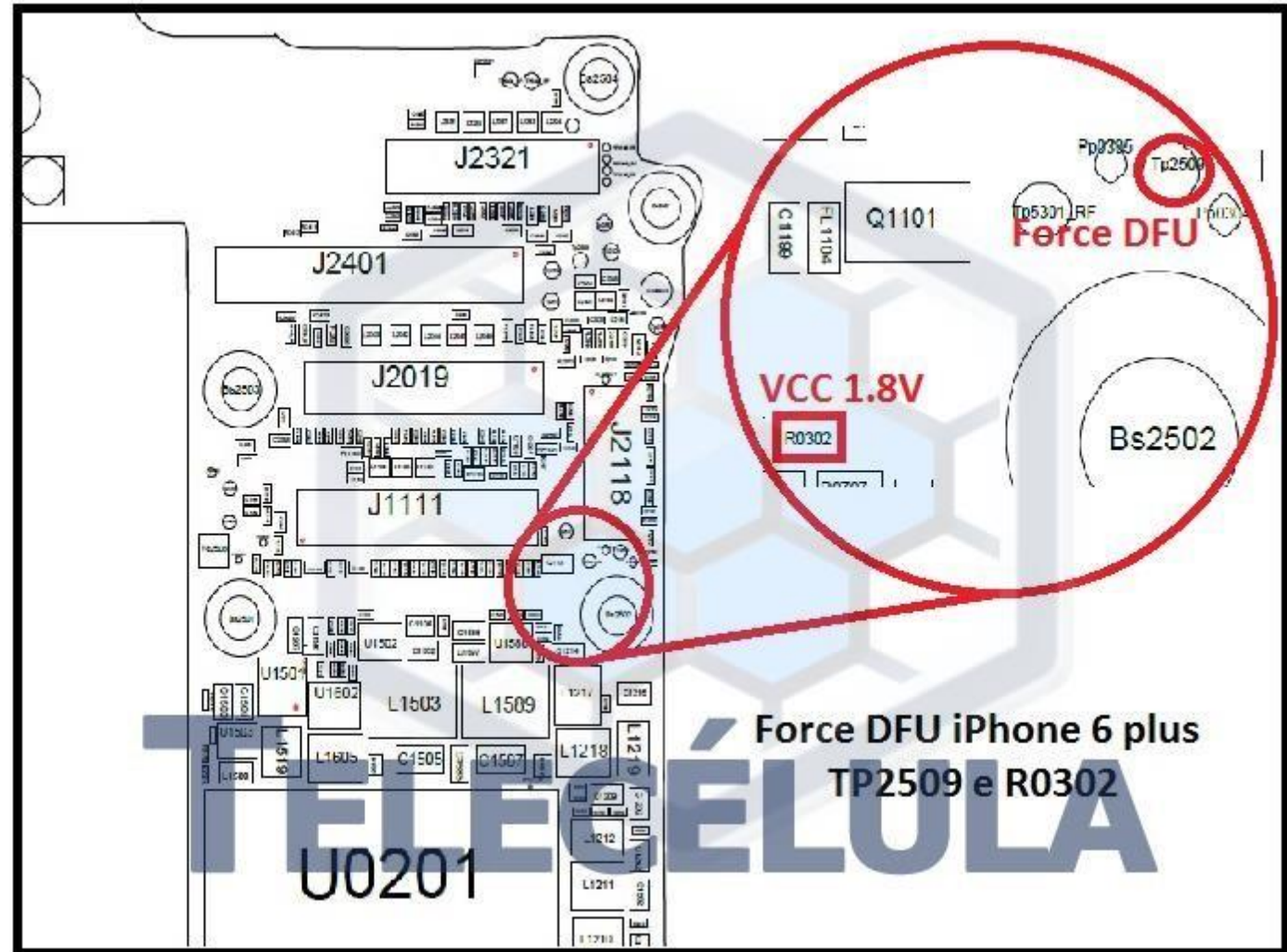
Force DFU iPhone 6 PCB



Force DFU iPhone 6

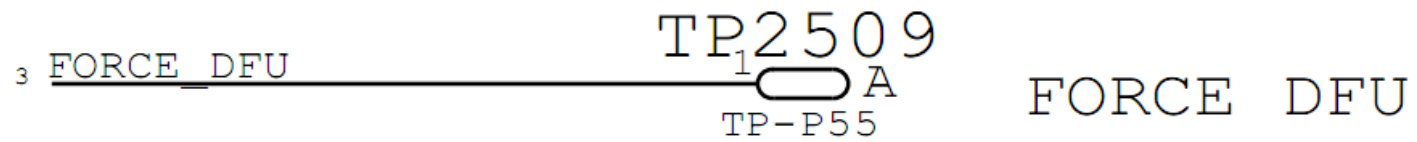


Force DFU iPhone 6 Plus



Force DFU iPhone 6 Plus

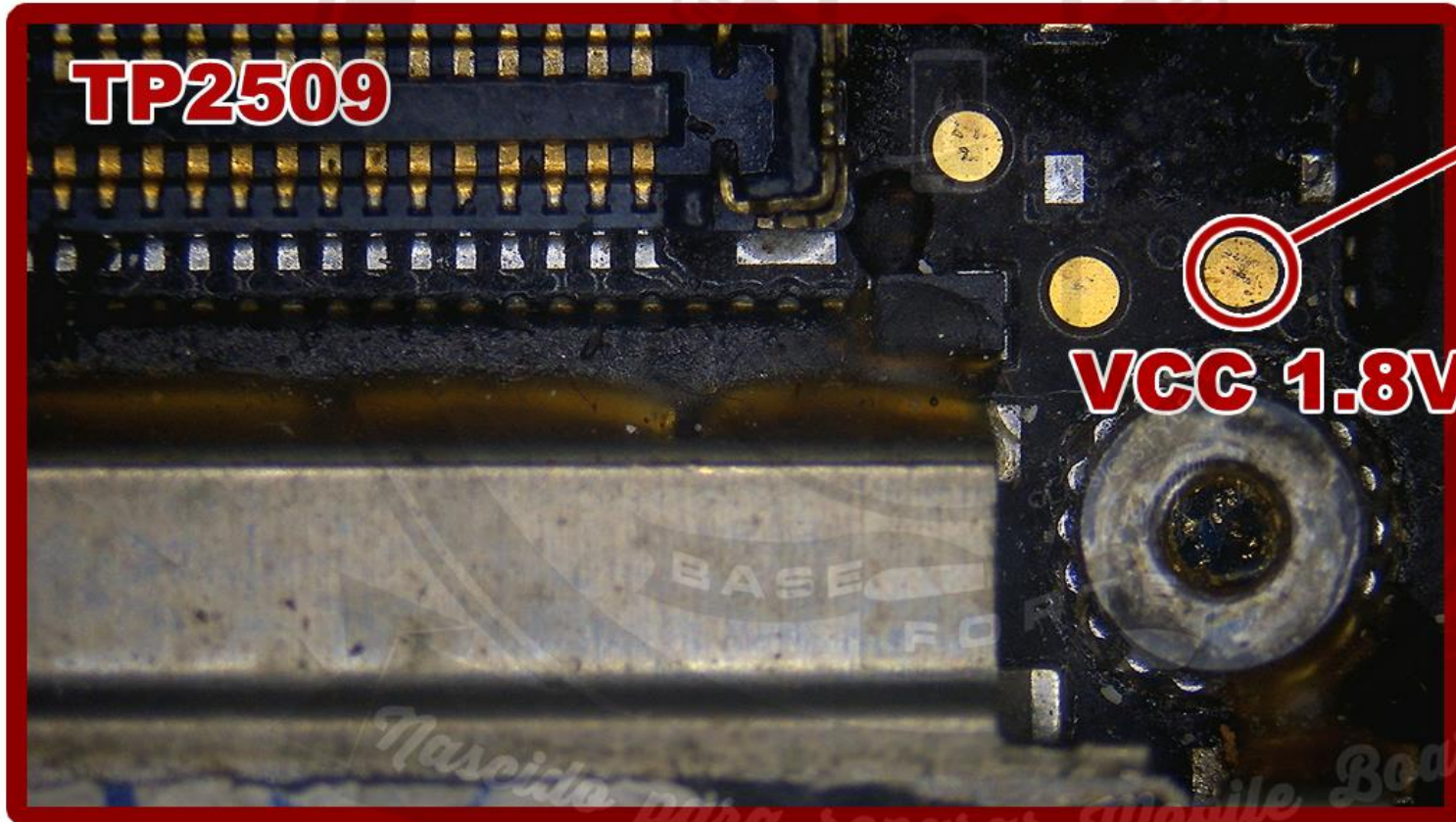
DFU



APPLE IPHONE 6 PLUS 820-3675A

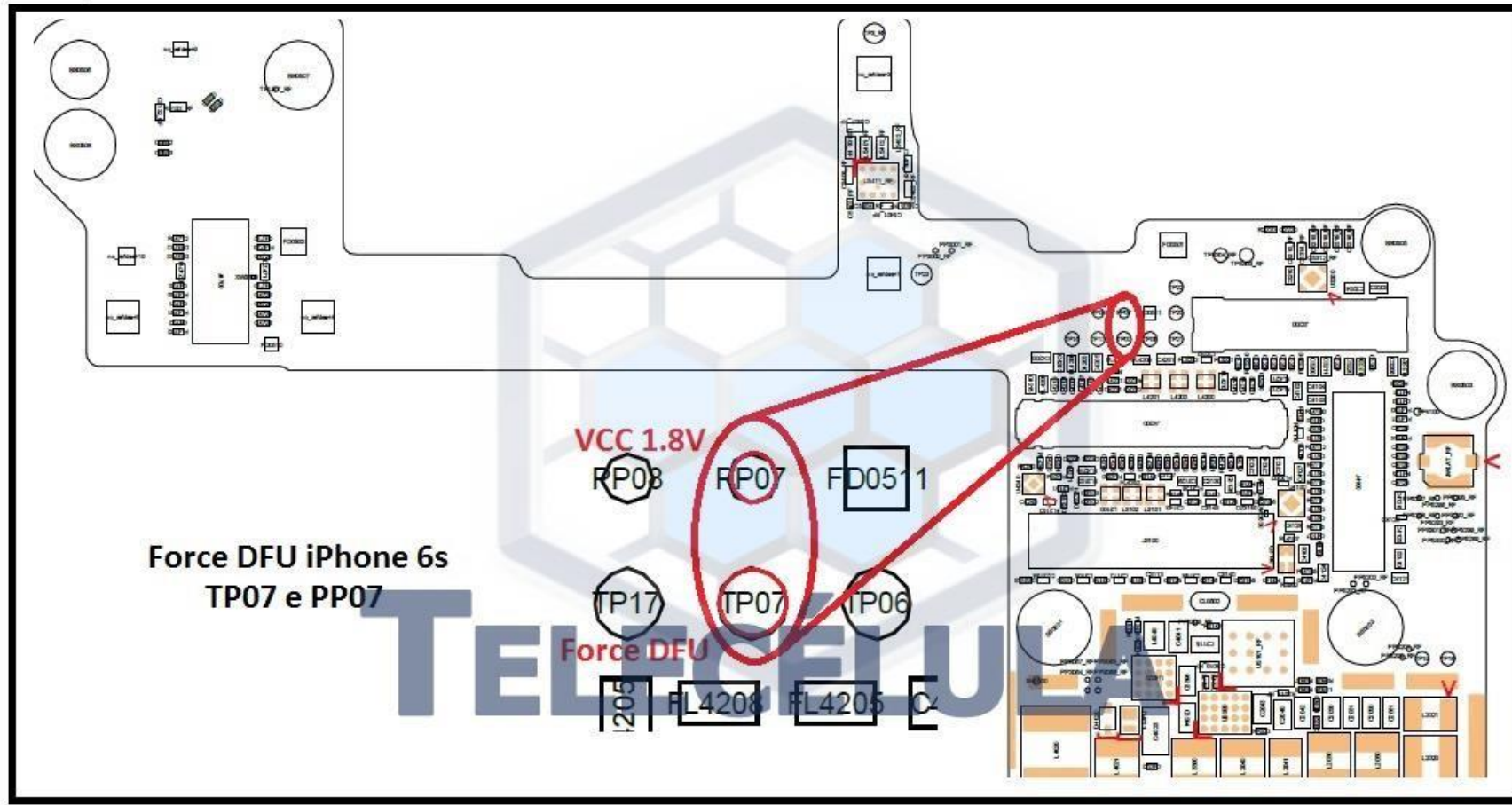
FORCE DFU

820-3675-A

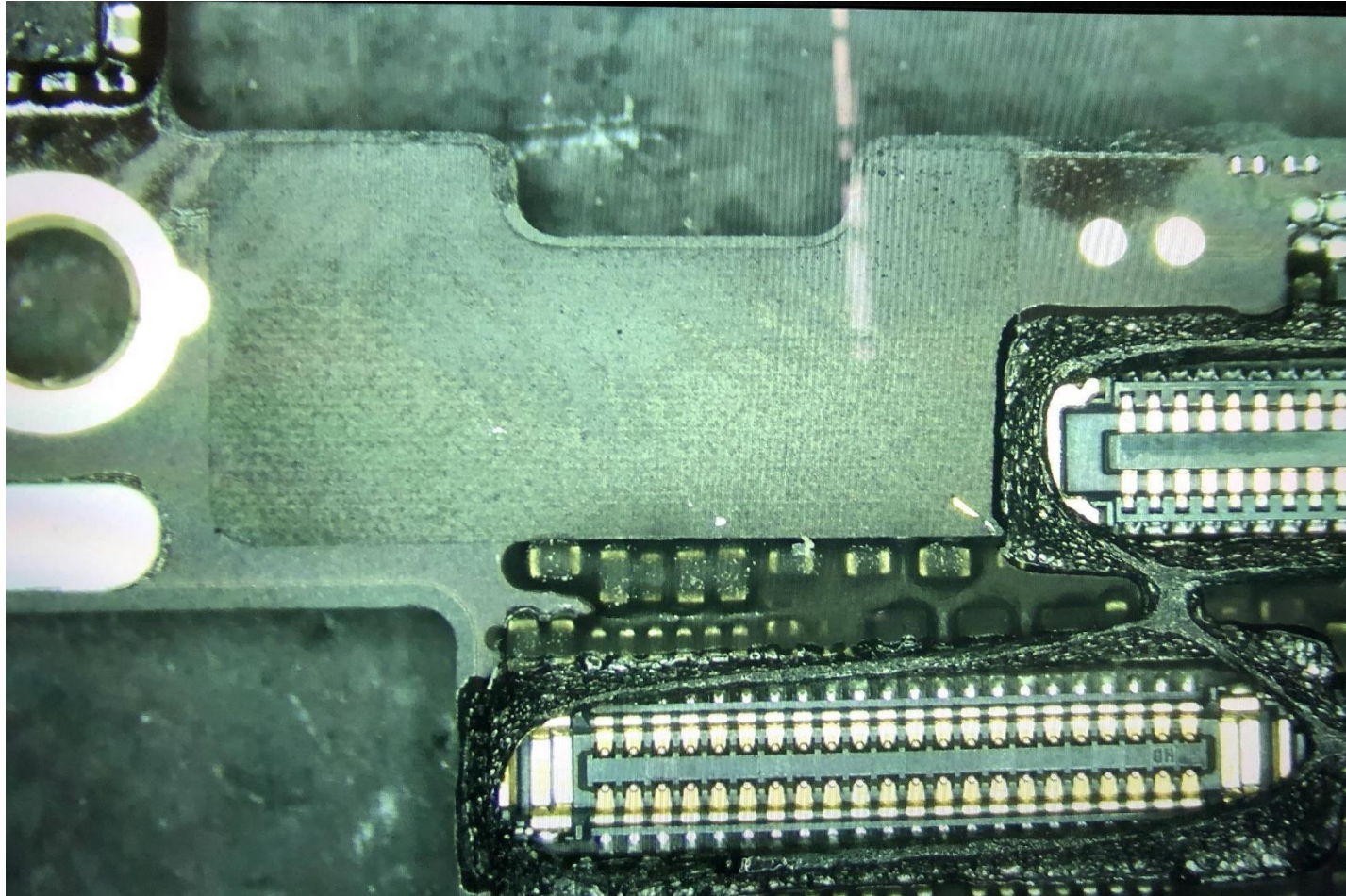


Masciotti's Mobile Board

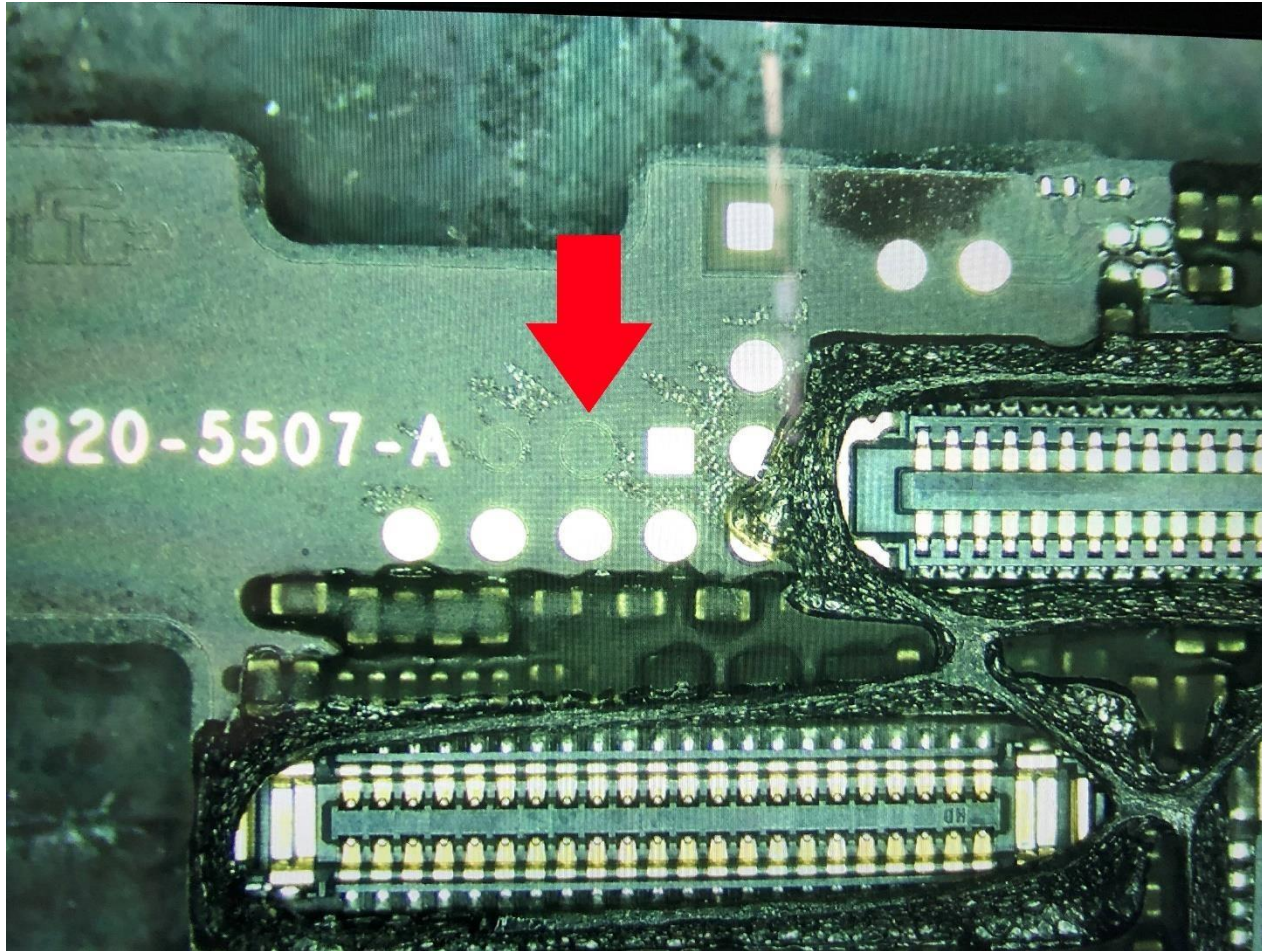
Force DFU iPhone 6S



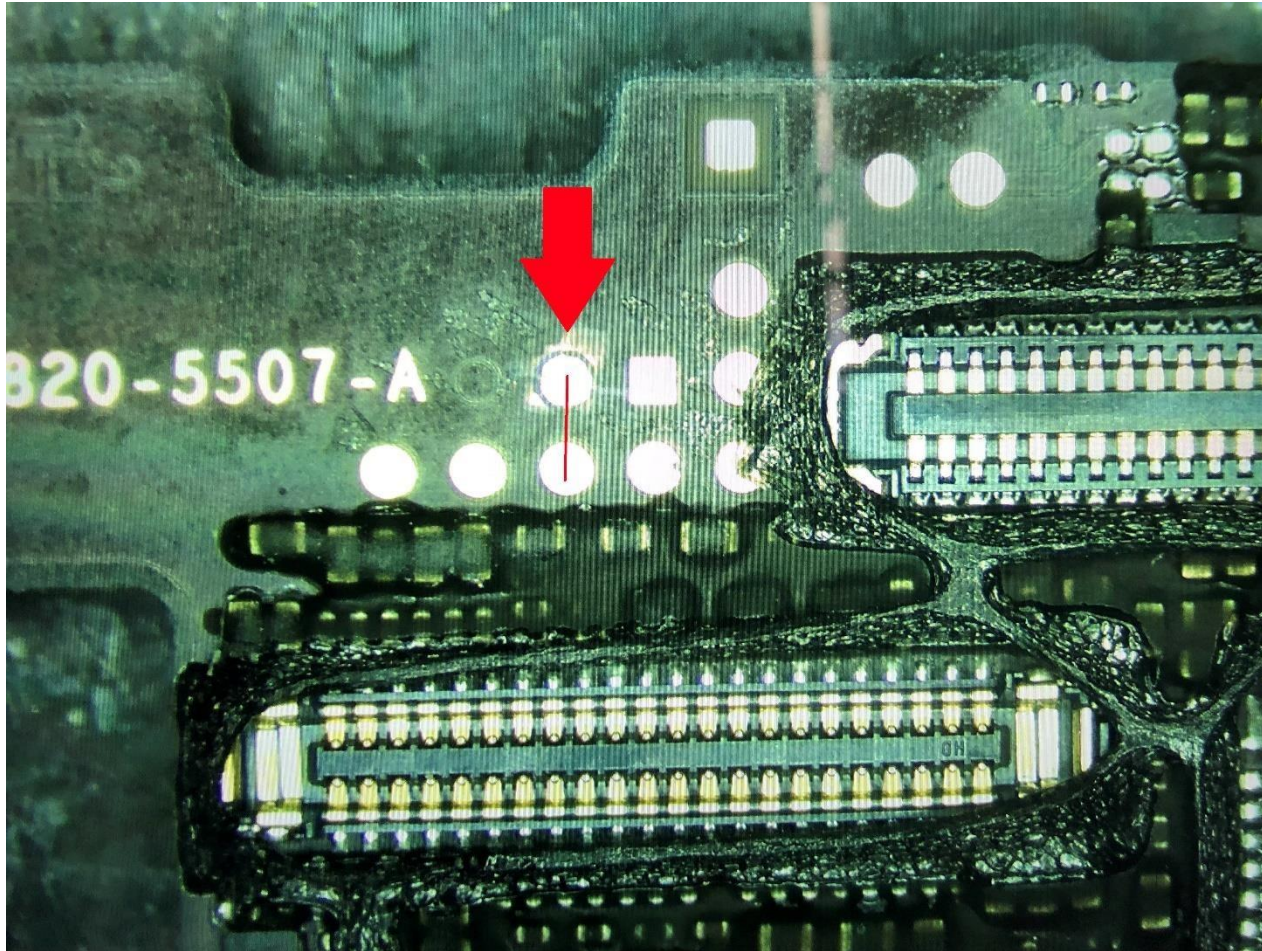
Force DFU iPhone 6S



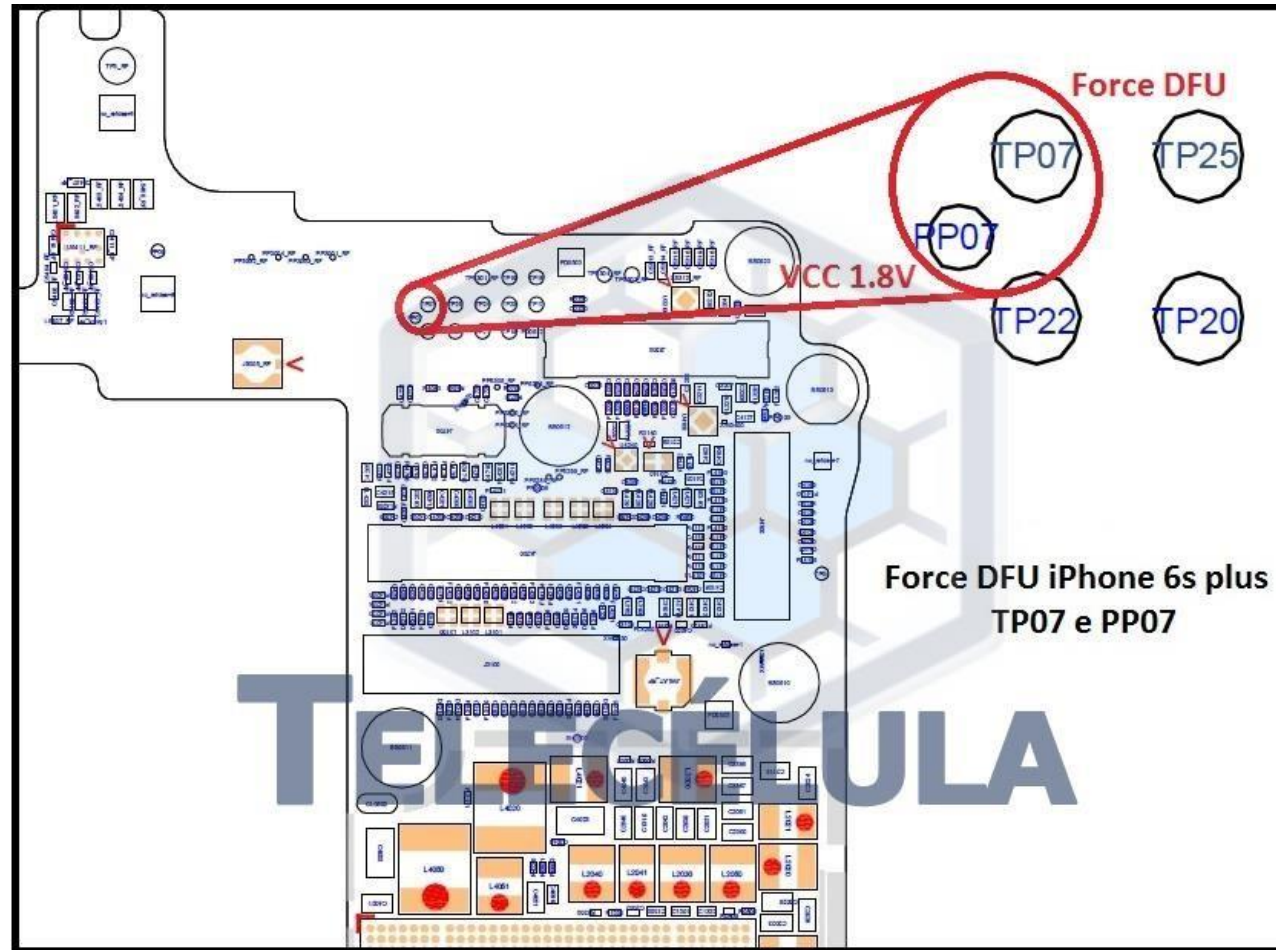
Force DFU iPhone 6S



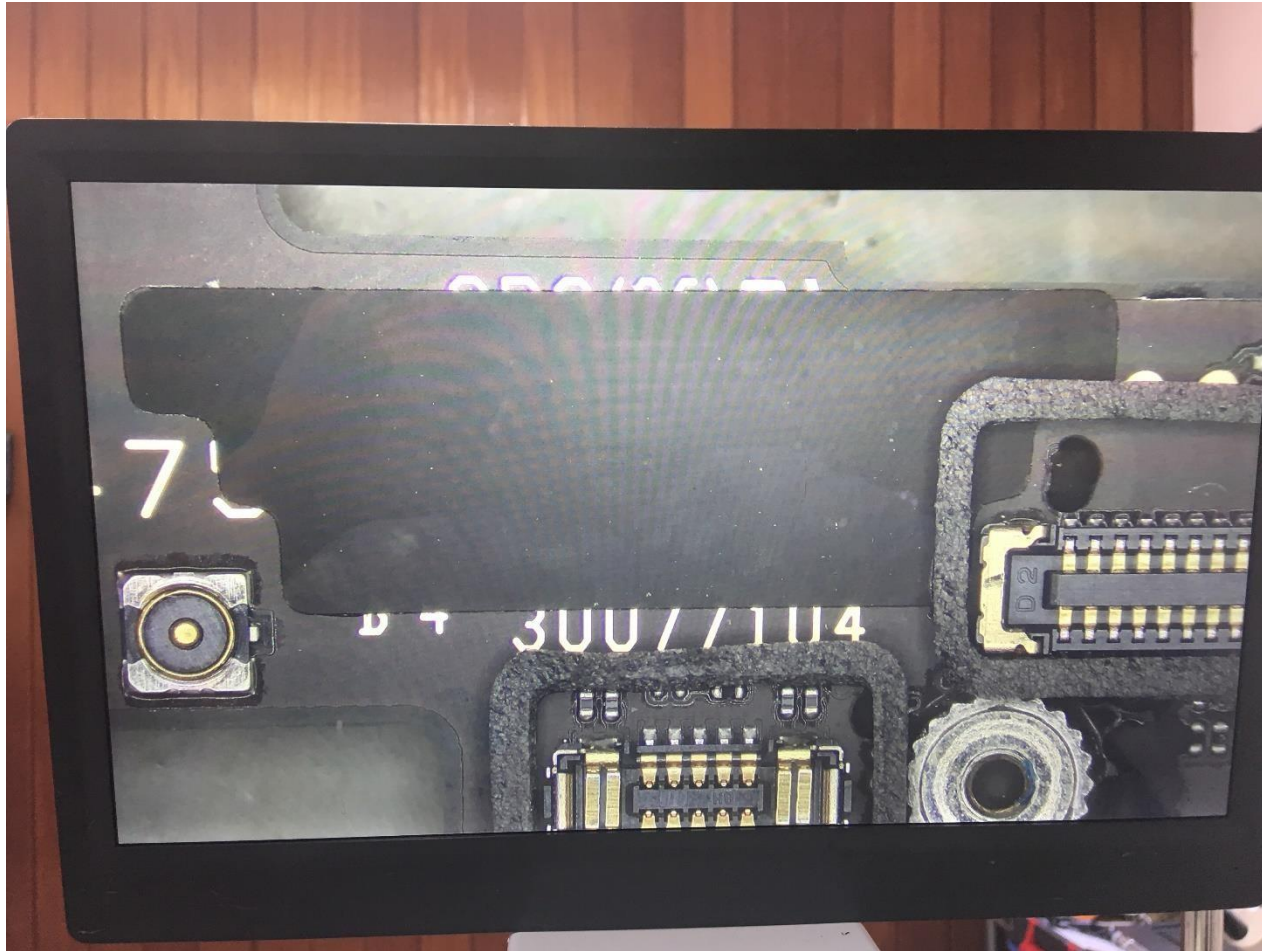
Force DFU iPhone 6S



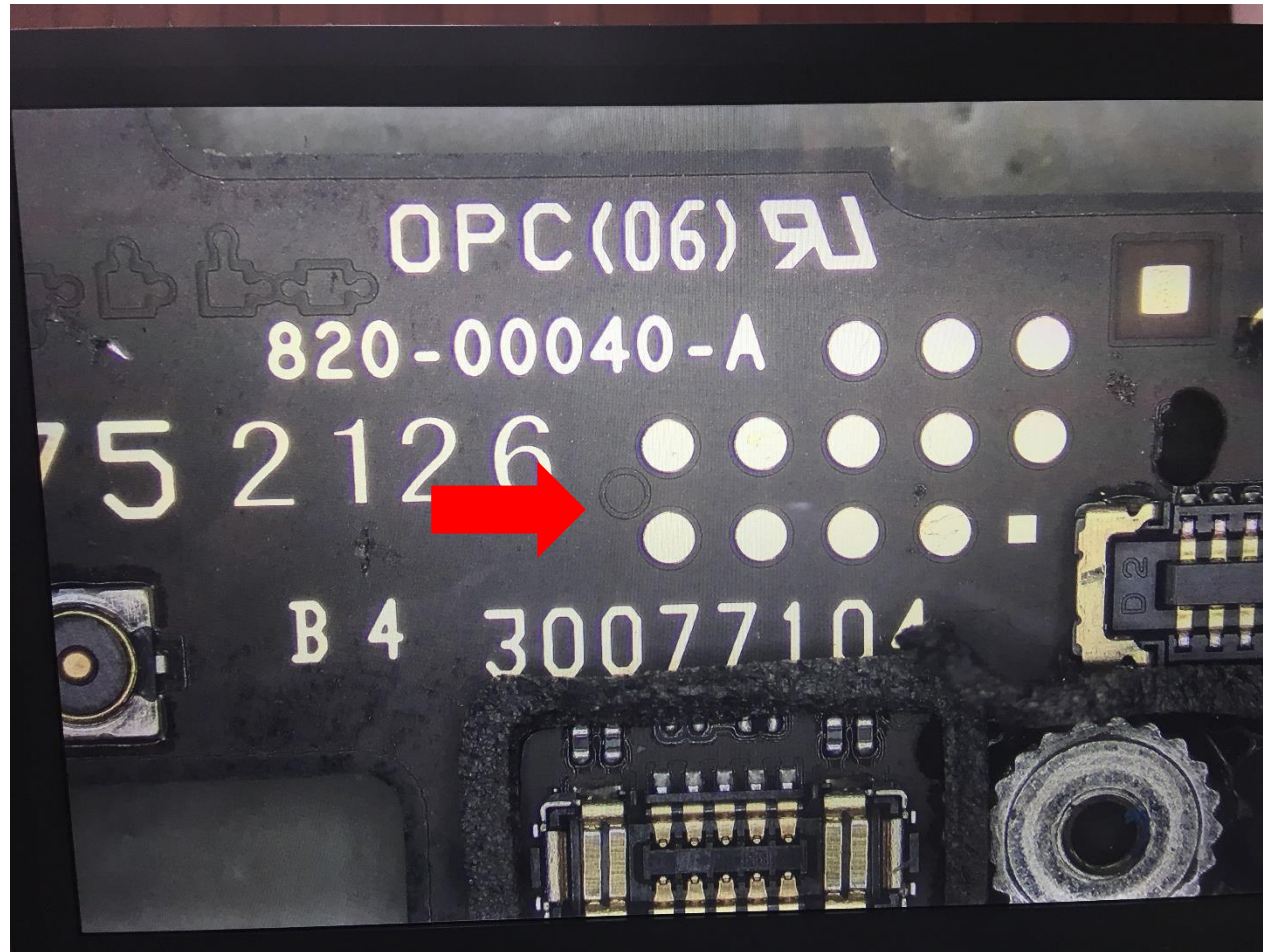
Force DFU iPhone 6S Plus



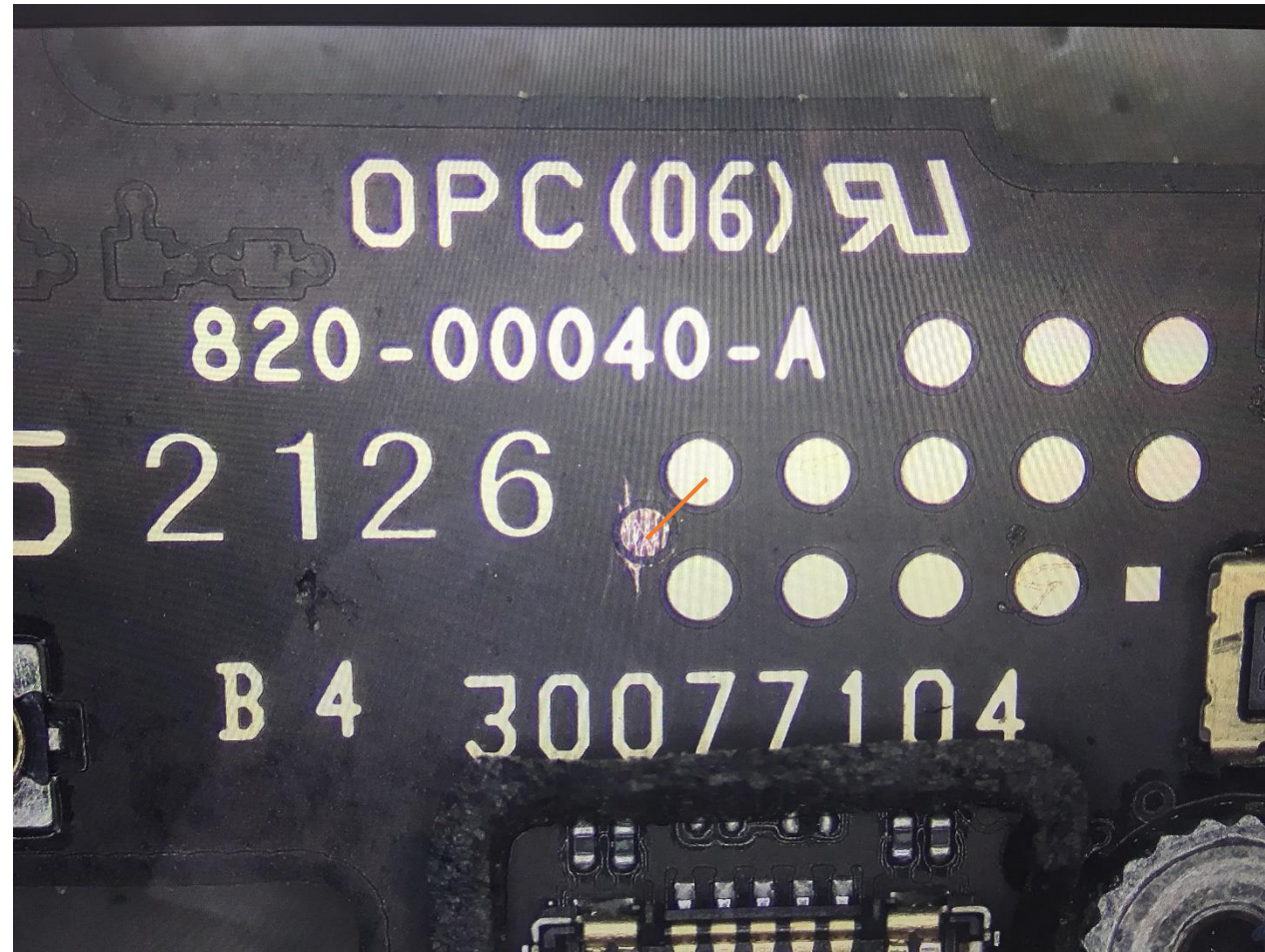
Force DFU iPhone 6S Plus



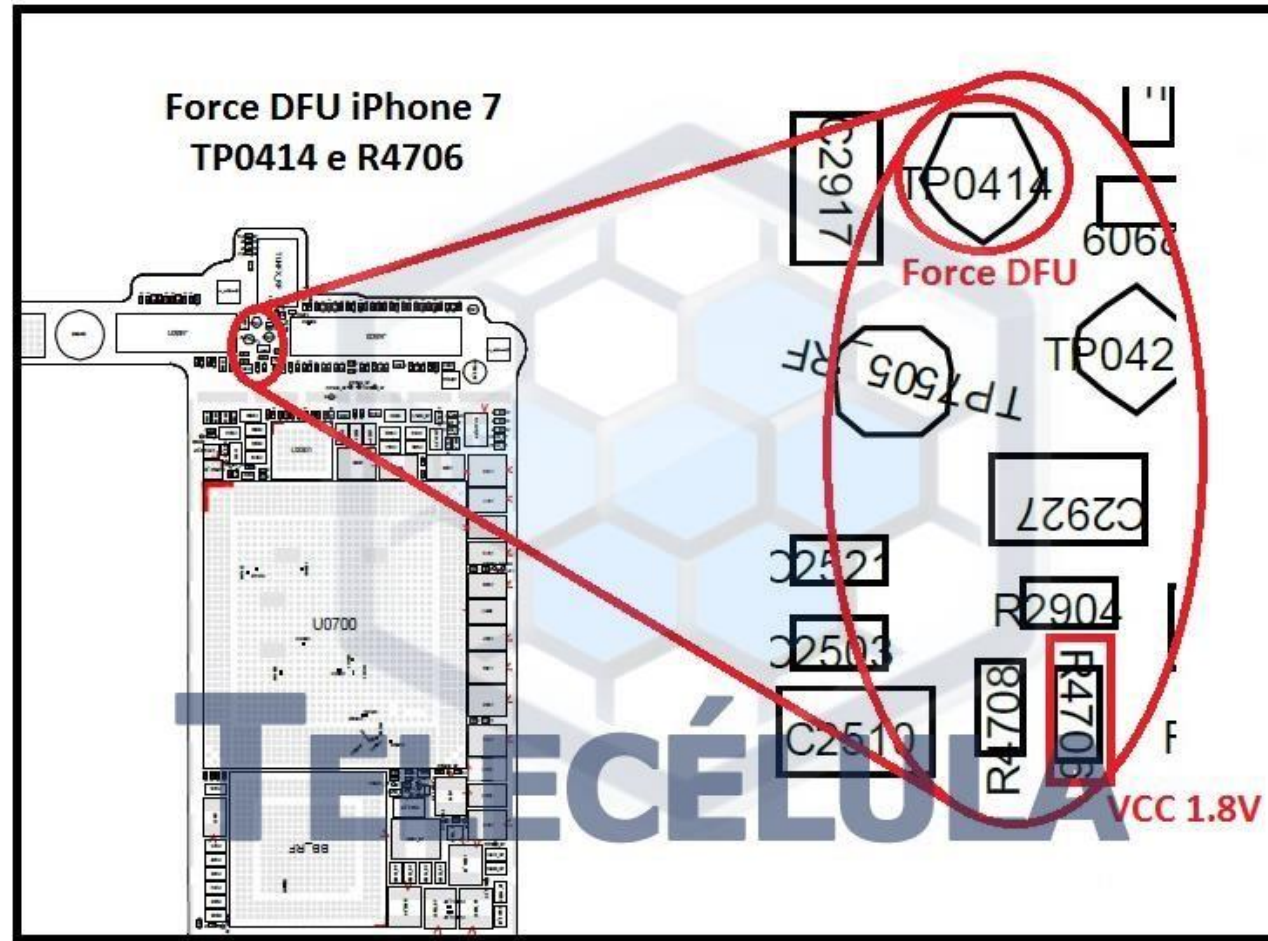
Force DFU iPhone 6S Plus



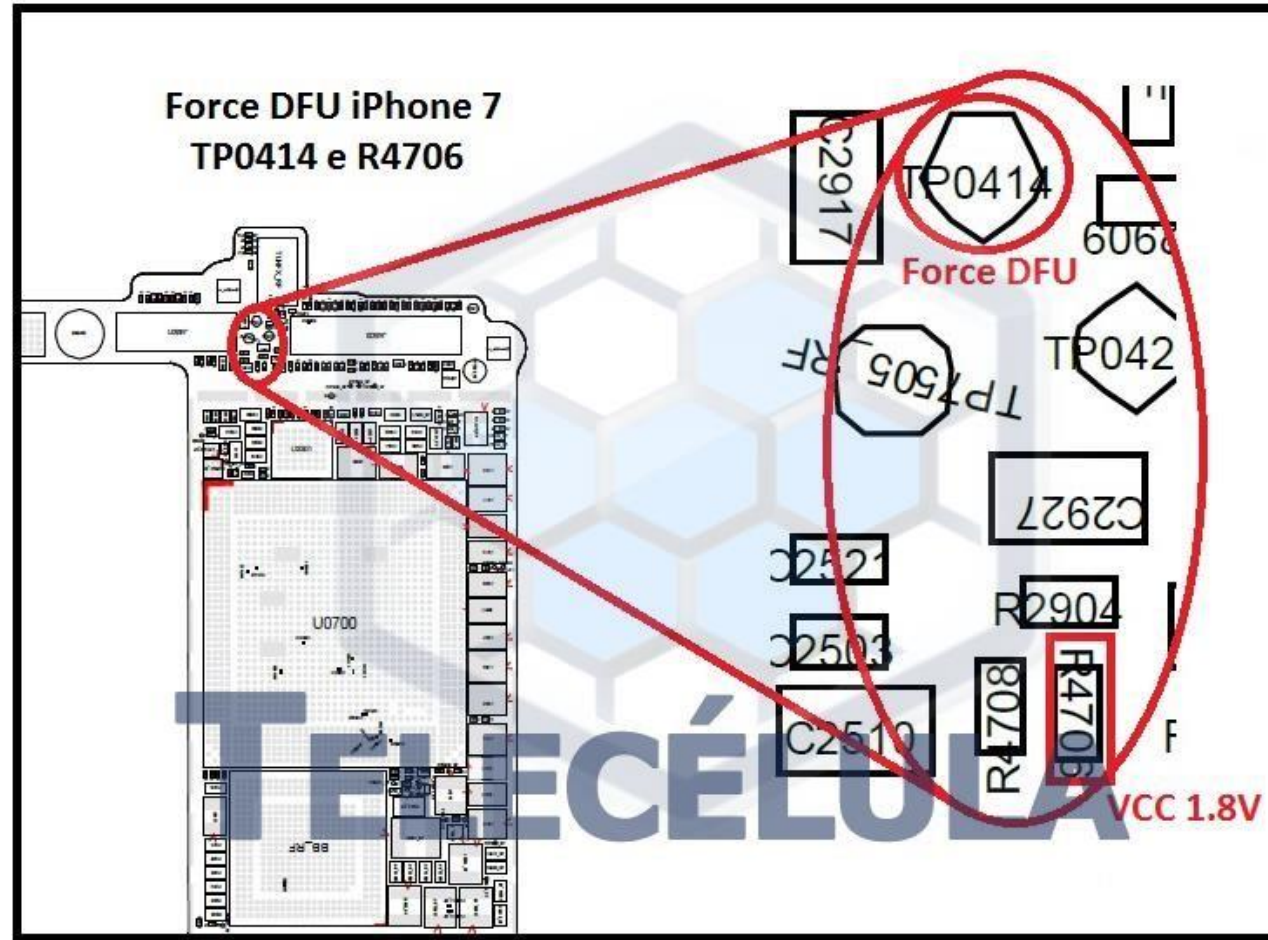
Force DFU iPhone 6S Plus



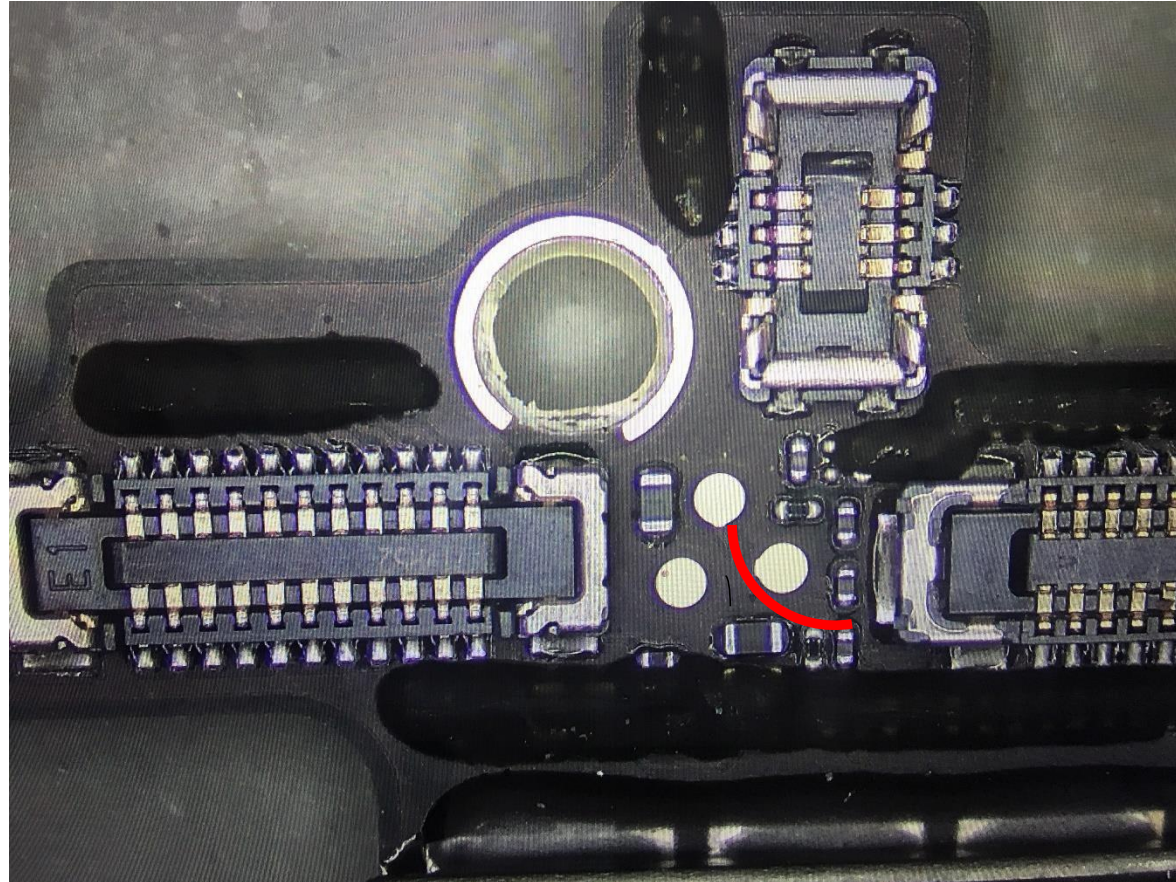
Force DFU iPhone 7



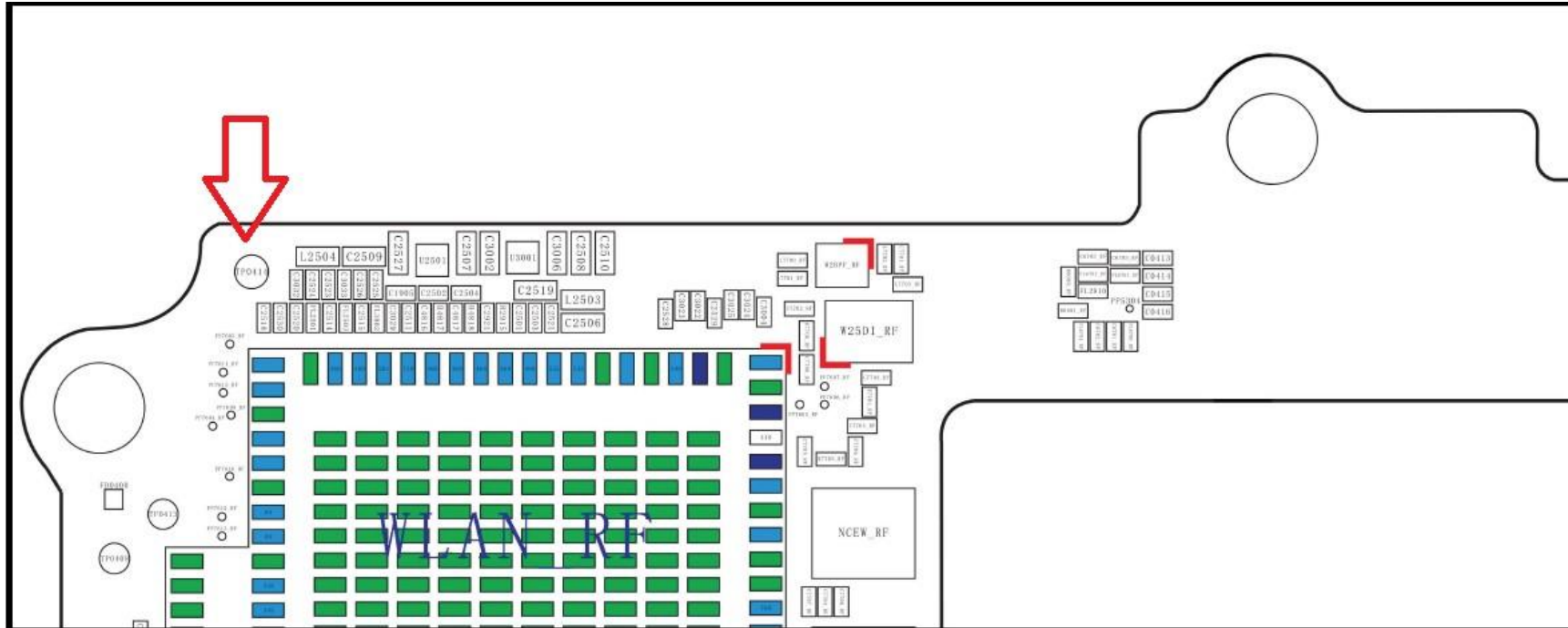
Force DFU iPhone 7

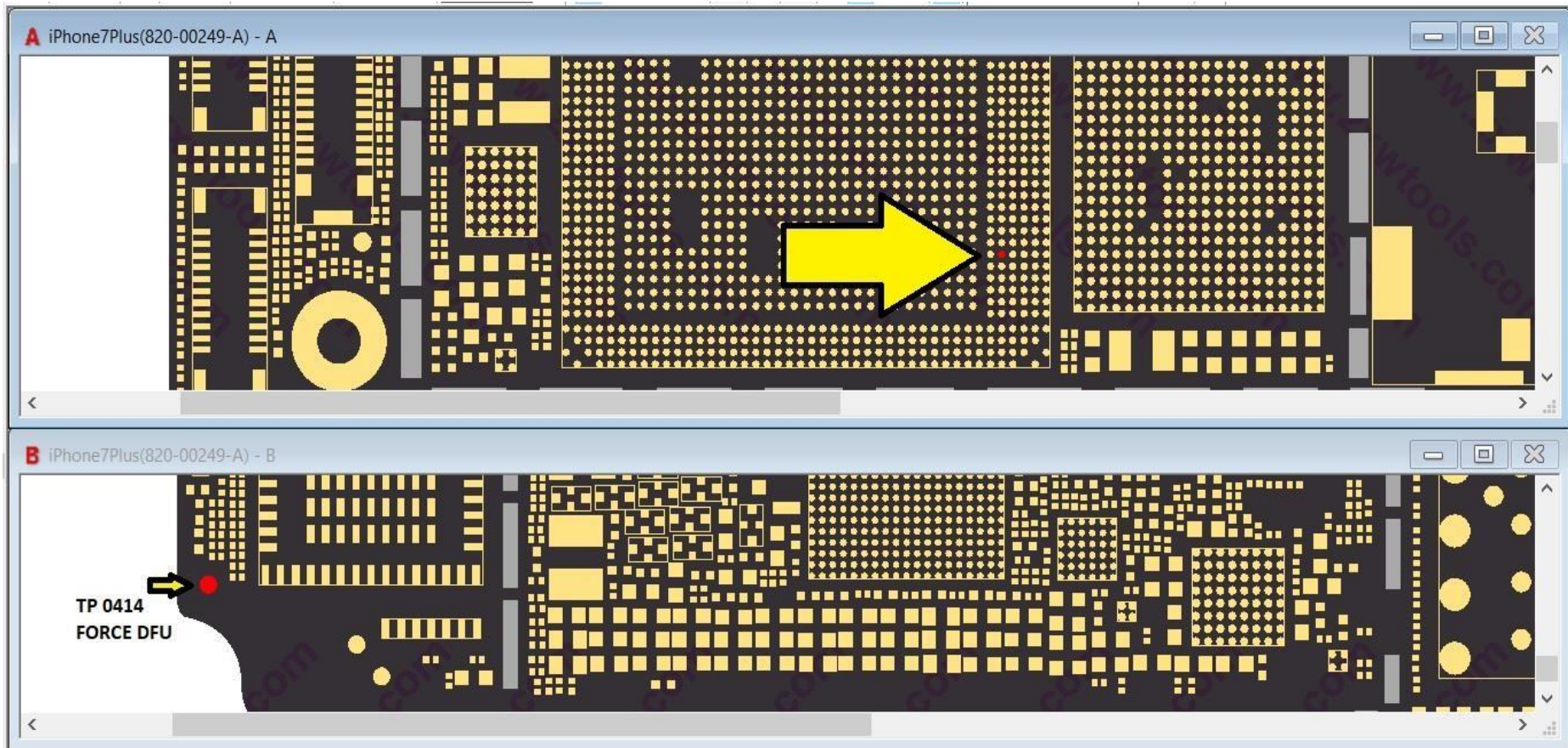


Force DFU iPhone 7



Force DFU iPhone 7 Plus (TP-0414)

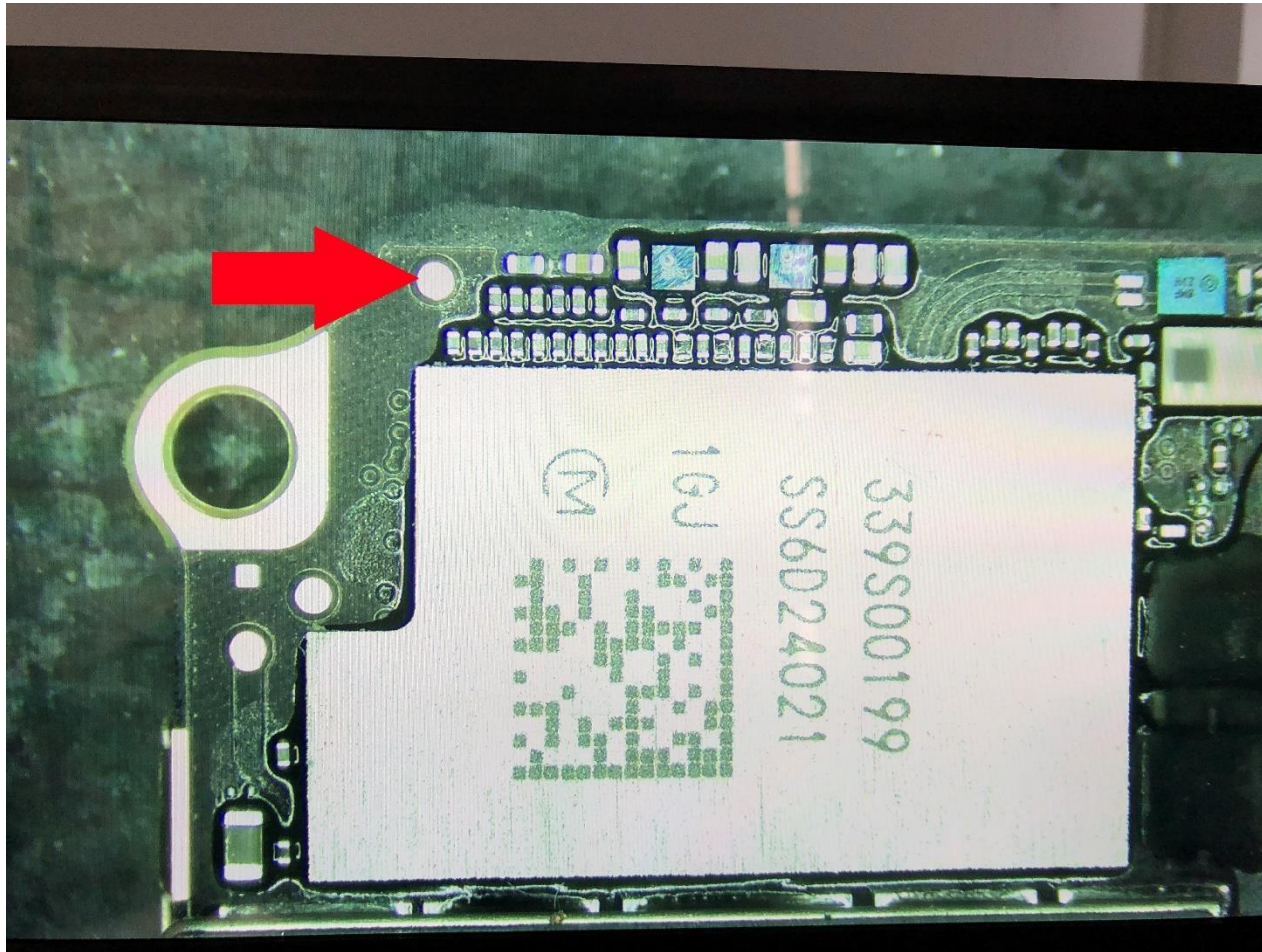




Force DFU iPhone 7 Plus (TP-0414)

- Como é possível observar no slide a seguir o modo Force DFU é uma porta na CPU Apple, habilitando o modo de DFU forçado no ato de inserir uma tensão de 1,8V, conectar o cabo e75 e desconectar a tensão na porta, aparelho em modo Force DFU.

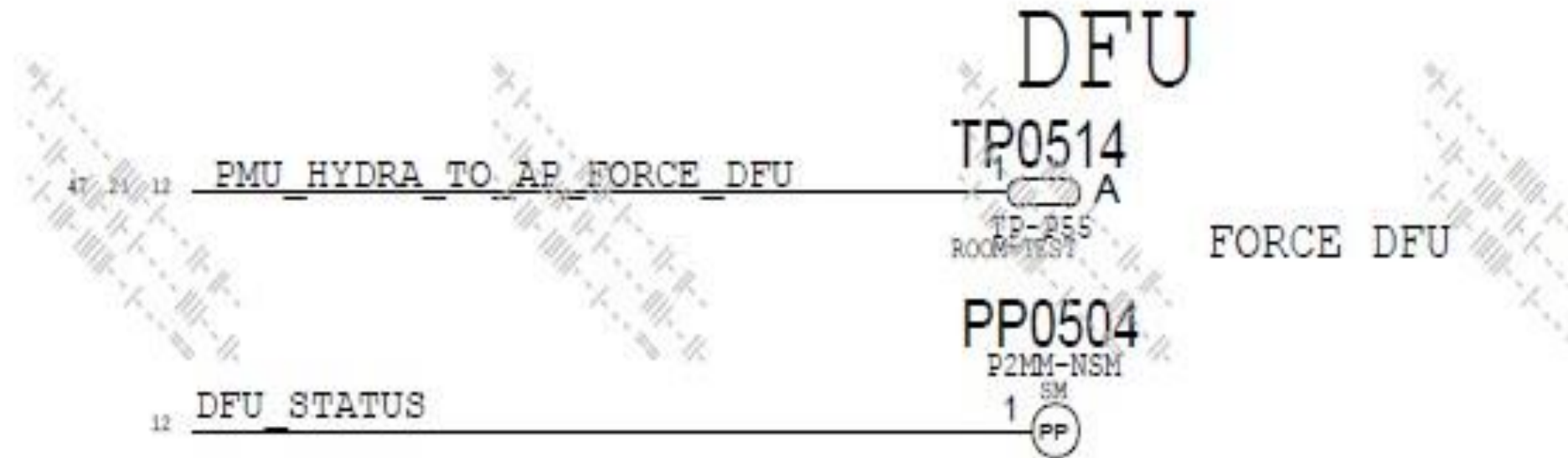
Force DFU iPhone 7 Plus (TP-0414)



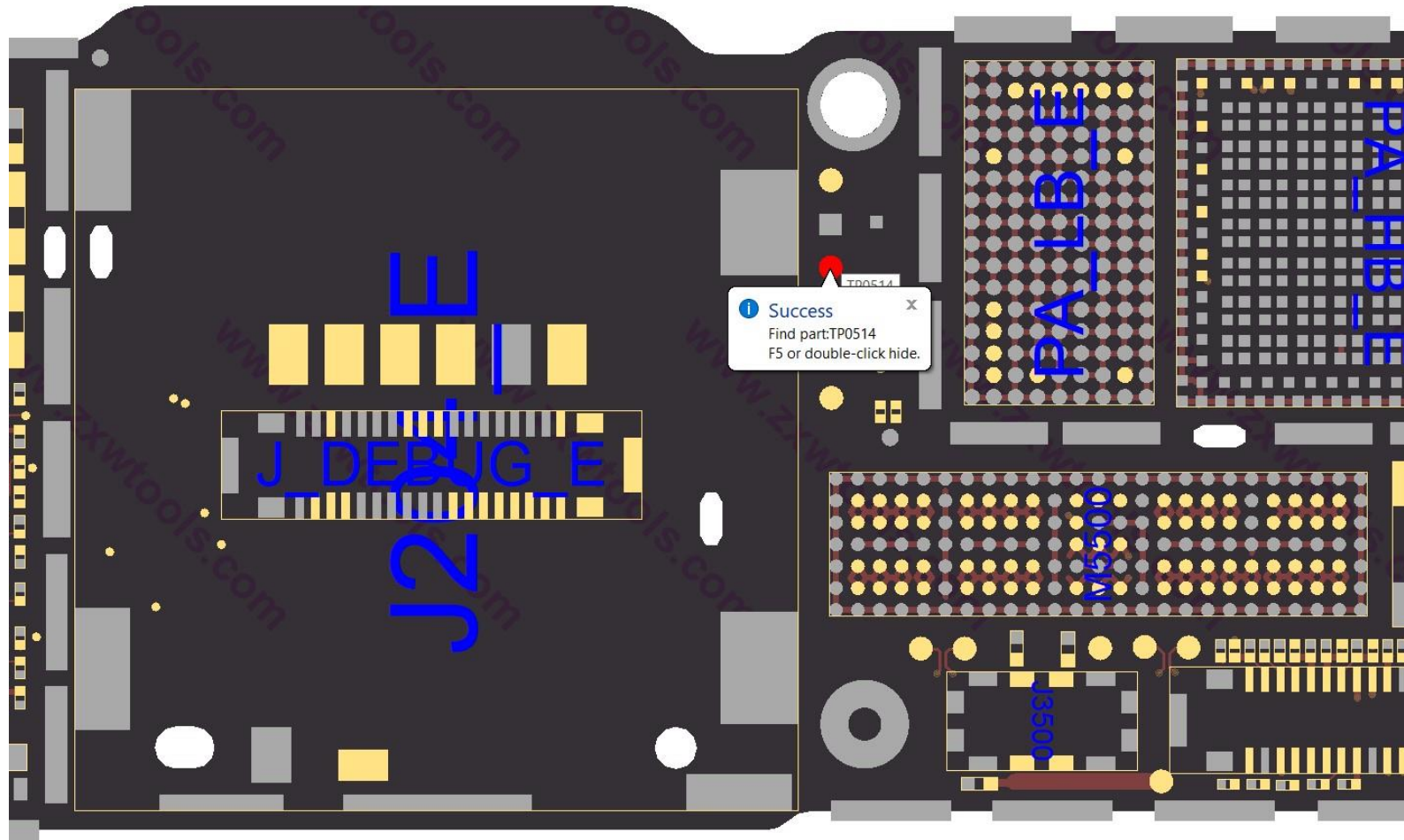
Force DFU iPhone 8 (TP-0514)



Force DFU iPhone 8 Plus (TP-0514)



Force DFU iPhone 8P (TP-0514)



APPLE IPHONE 8 PLUS INTEL

FORCE DFU



820-00847A



VCC 1.8V



REMOVER OU CORTAR
CUIDADOSAMENTE A FITA
PROTETIVA DA BOARD

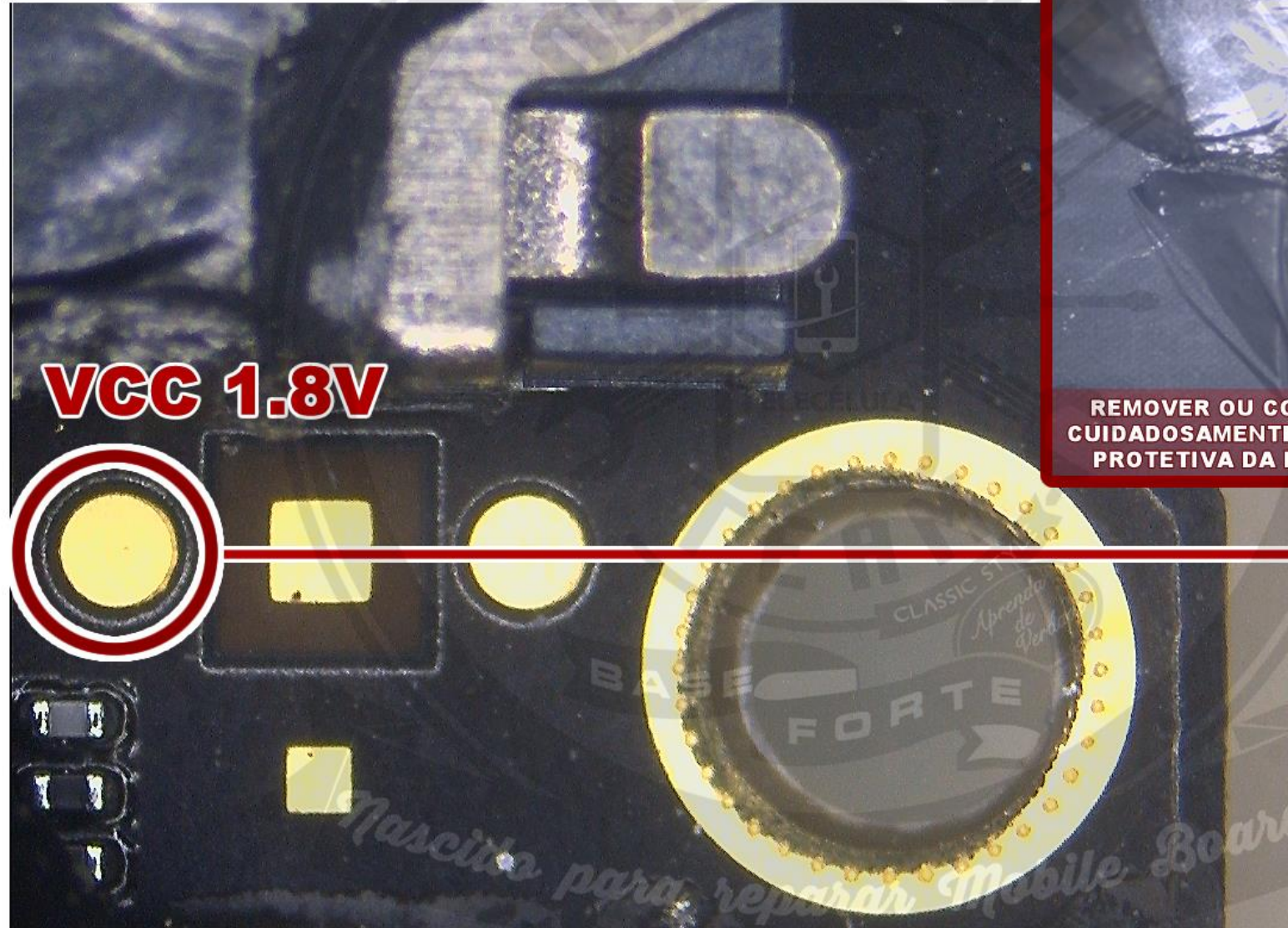


IPHONE 8 PLUS QUALCOMM

FORCE DFU



820-00846A

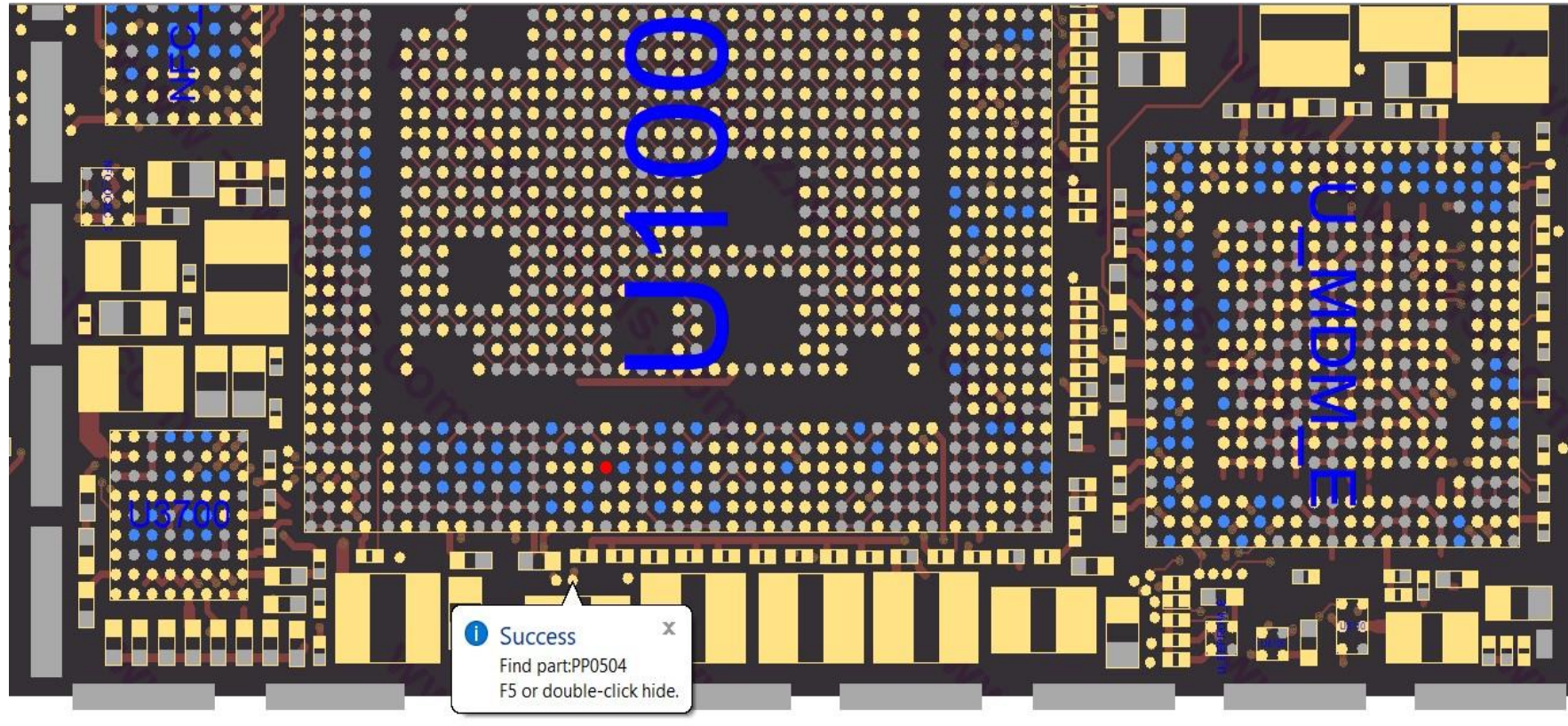


VCC 1.8V

REMOVER OU CORTAR
CUIDADOSAMENTE A FITA
PROTETIVA DA BOARD

Mascote para reparar Mobile Board

Force DFU iPhone 8P Status (PP-0504)



Force DFU iPhone X

11 PMU_HYDRA_TO_AP_FORCE_DFU

DFU

TP0714

1 A

TP-P55
ROOM=TEST

FORCE DFU

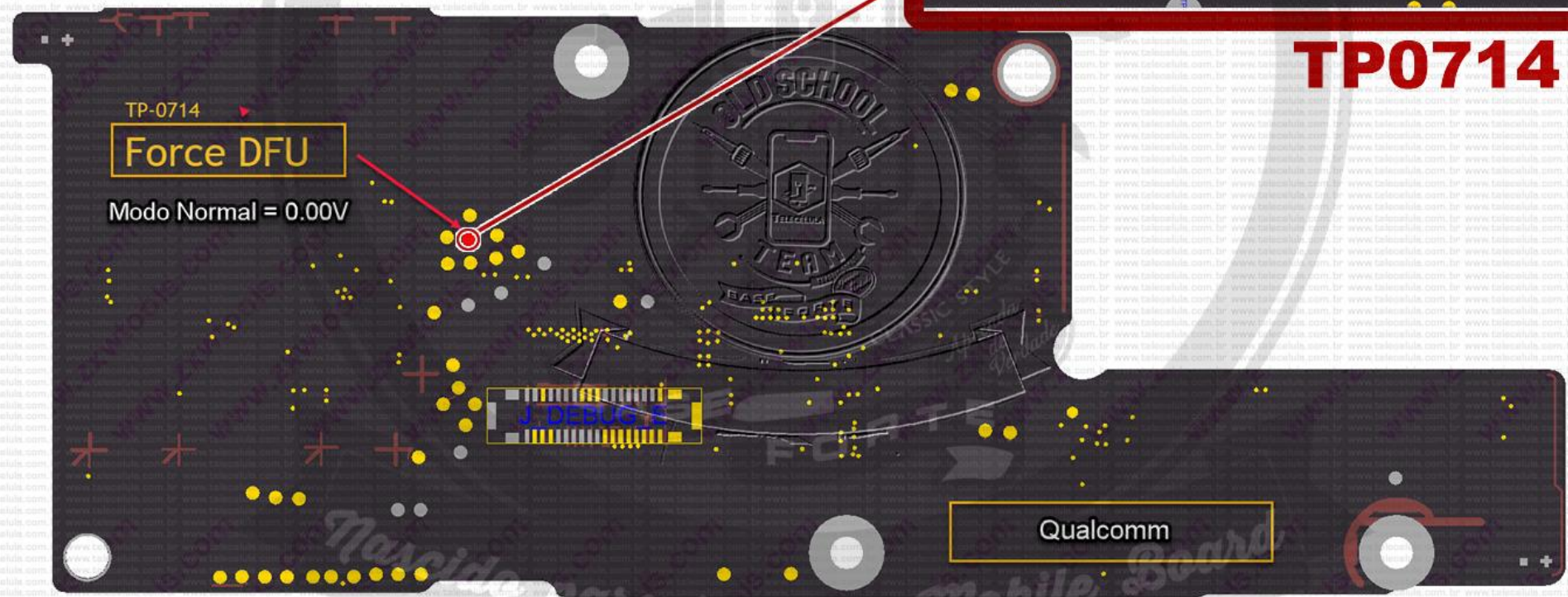
APPLE IPHONE X QUALCOMM

FORCE DFU



820-00846A

REMOVER CUIDADOSAMENTE A FITA BLINDAGEM PROTETIVA DA BOARD E RASPAR O VERNIZ SOBRE O TEST POINT



TP-0714
Force DFU
Modo Normal = 0.00V

TP0714

Qualcomm

www.telcelula.com.br

APPLE IPHONE X INTEL

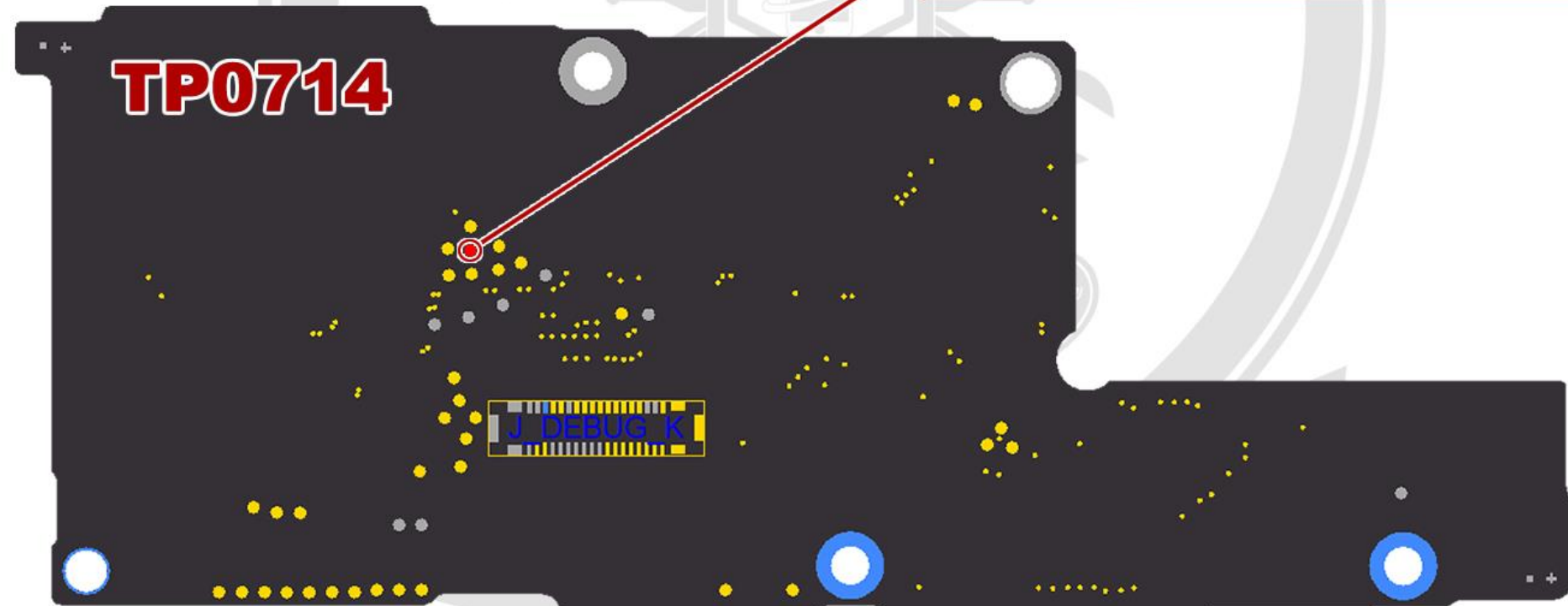
FORCE DFU



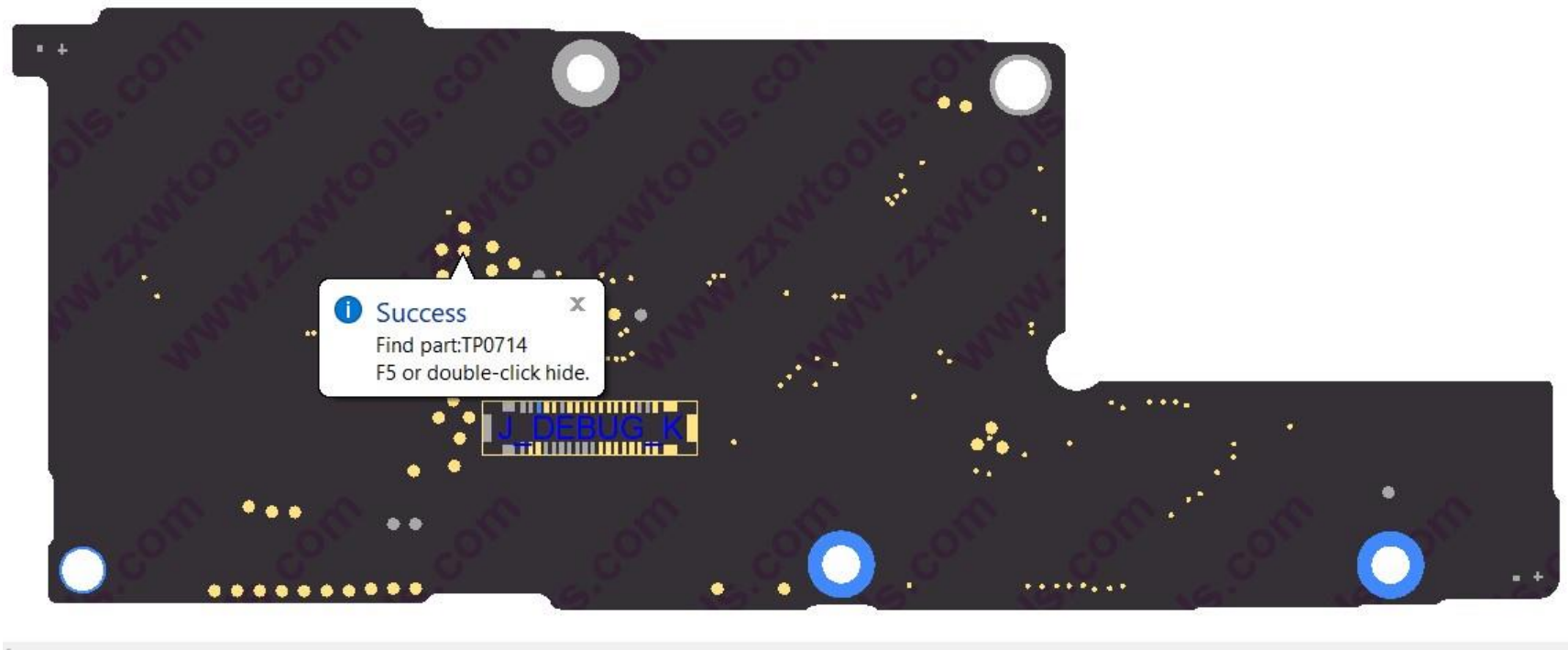
820-00863-12

REMOVER CUIDADOSAMENTE A FITA BLINDAGEM
PROTETIVA DA BOARD E RASPAR O VERNIZ
SOBRE O TEST POINT

VCC 1.8V



Force DFU iPhone X



Force DFU iPhone XS

11 PMU_HYDRA_TO_AP_FORCE_DFU

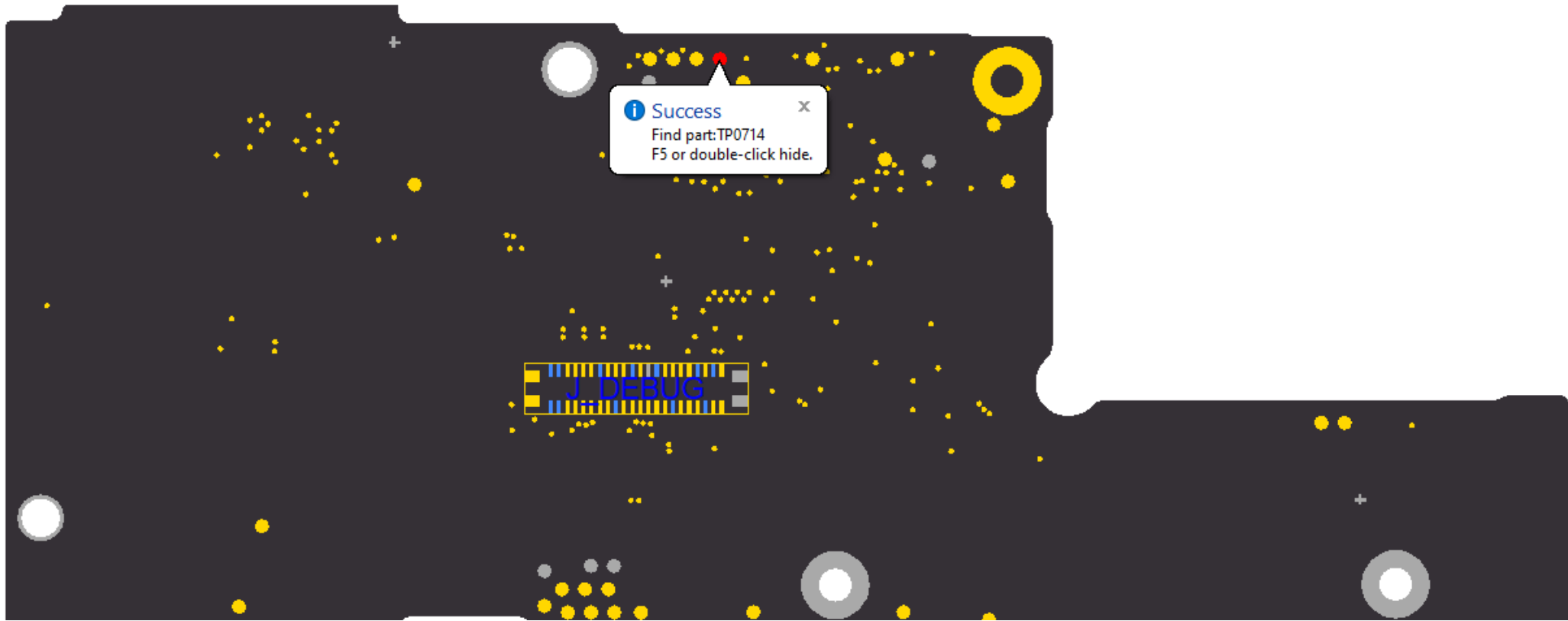
DFU

TP0714
1 A

TP-P55
ROOM=TEST

FORCE DFU

Force DFU iPhone XS



APPLE IPHONE XS

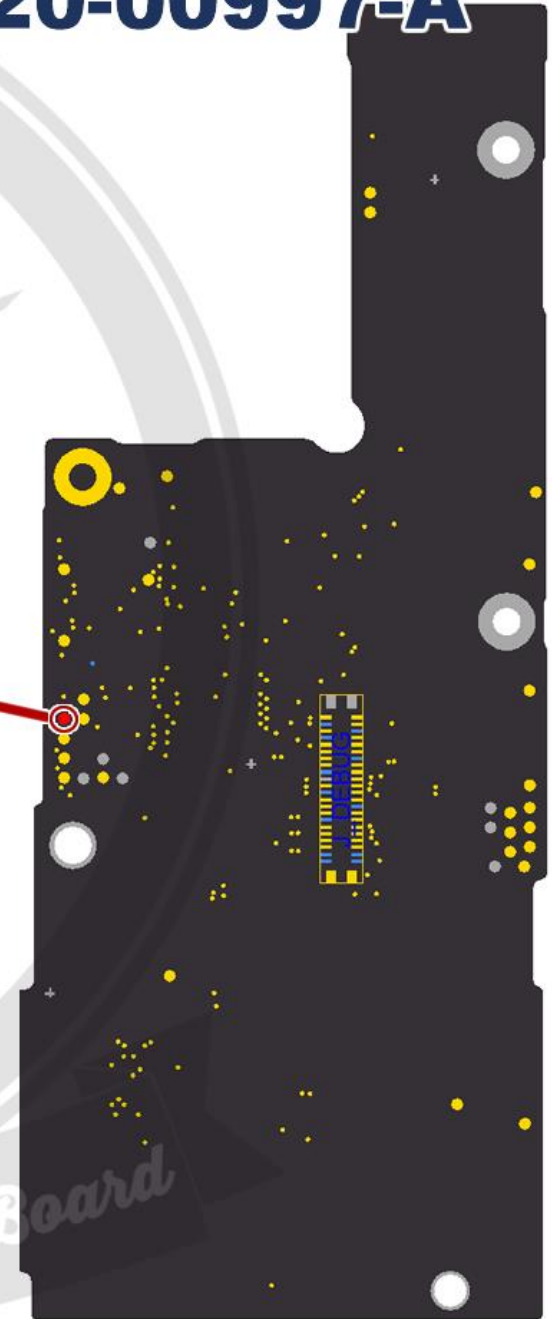
FORCE DFU



820-00997-A

REMOVER CUIDADOSAMENTE A FITA BLINDAGEM
PROTETIVA DA BOARD SOBRE O TEST POINT

TP0714
VCC 1.8V



Masci
para reparar Mobile Board

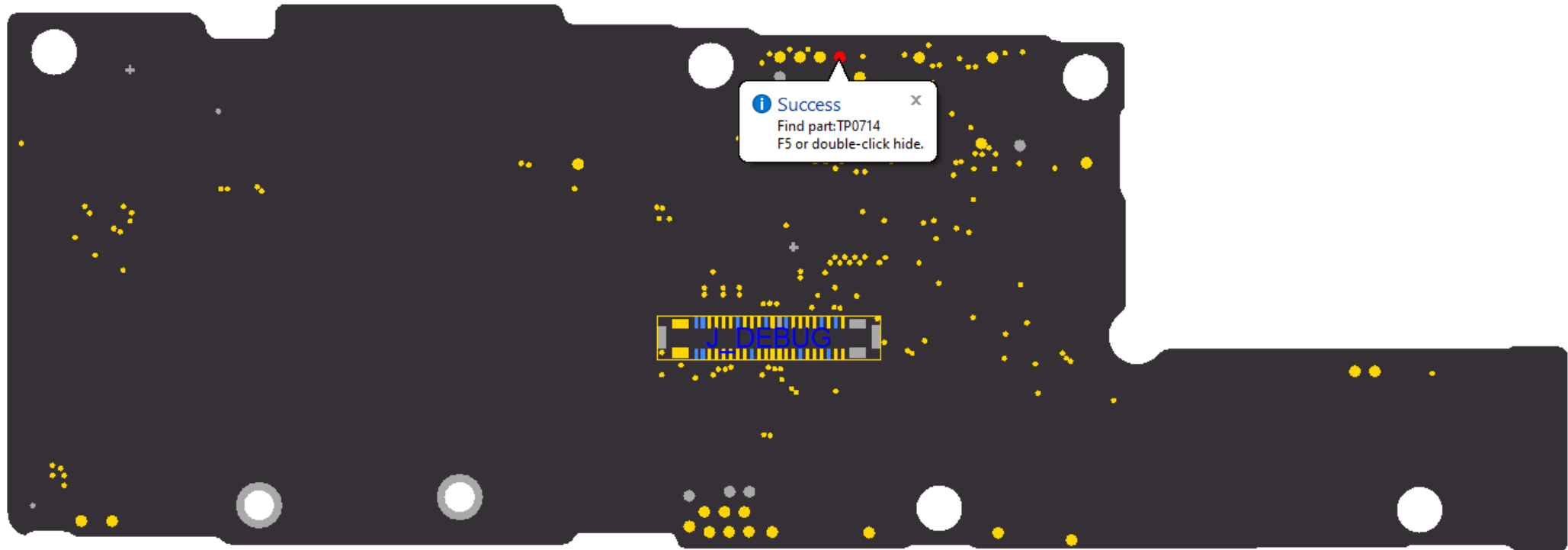
Force DFU iPhone XS MAX

11 PMU HYDRA TO AP FORCE DFU

DFU
TP0714
1 A
TP-P55
ROOM=TEST

FORCE DFU

Force DFU iPhone XS MAX



APPLE IPHONE XS MAX

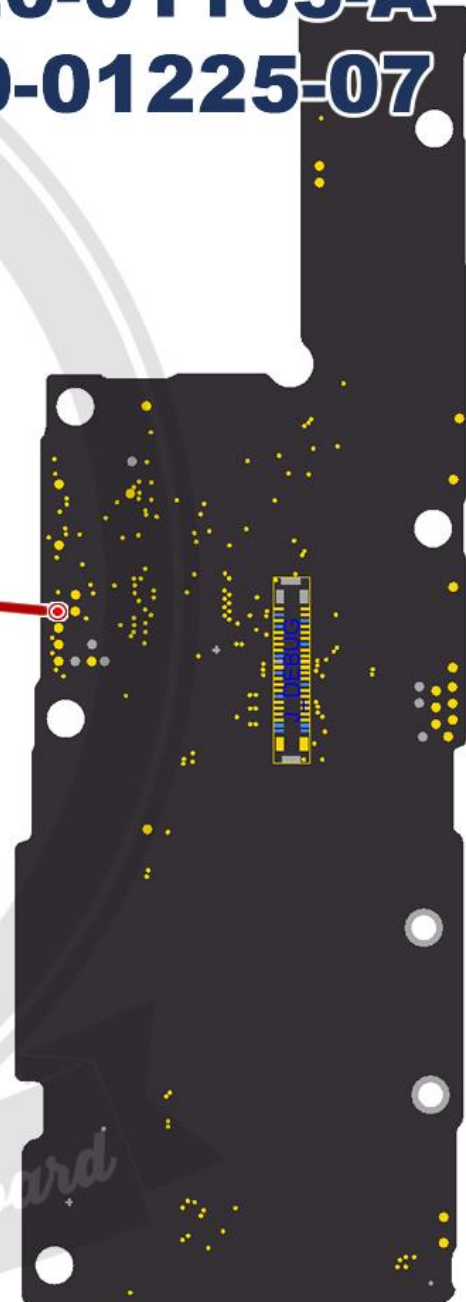
FORCE DFU



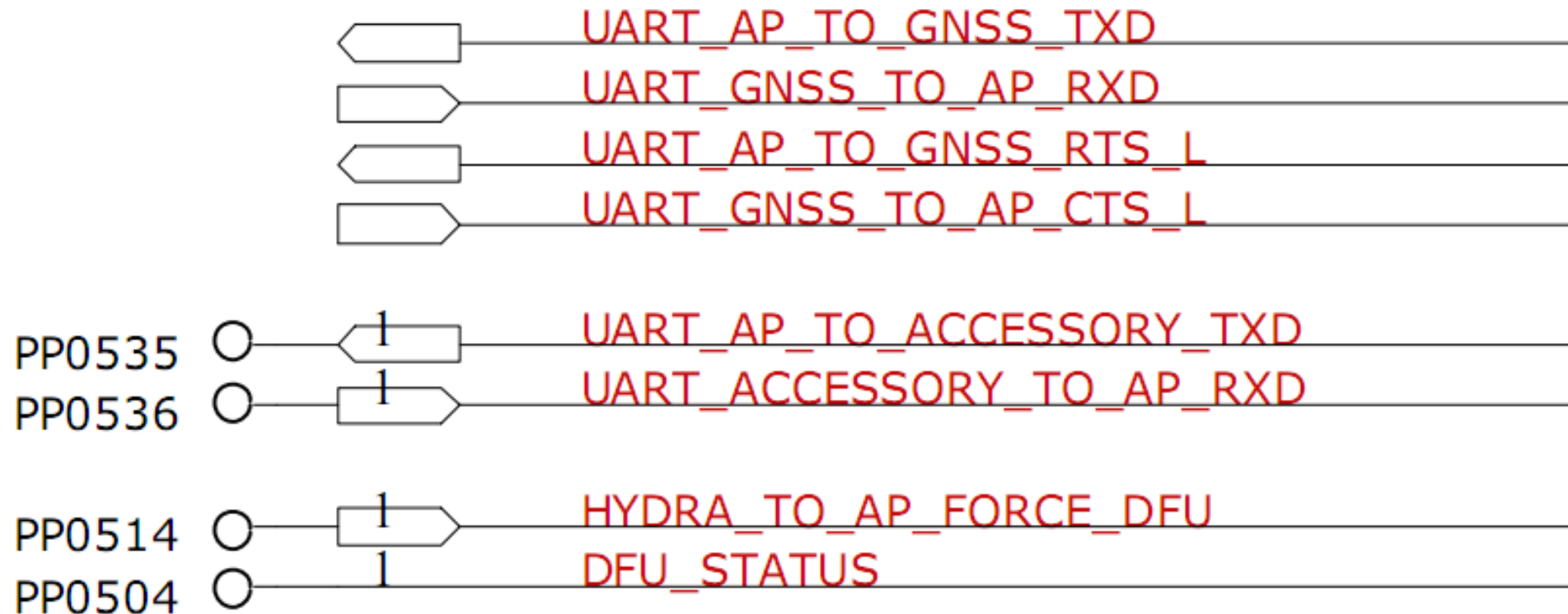
820-01103-A
820-01225-07

REMOVER CUIDADOSAMENTE A FITA BLINDAGEM
PROTETIVA DA BOARD SOBRE O TEST POINT

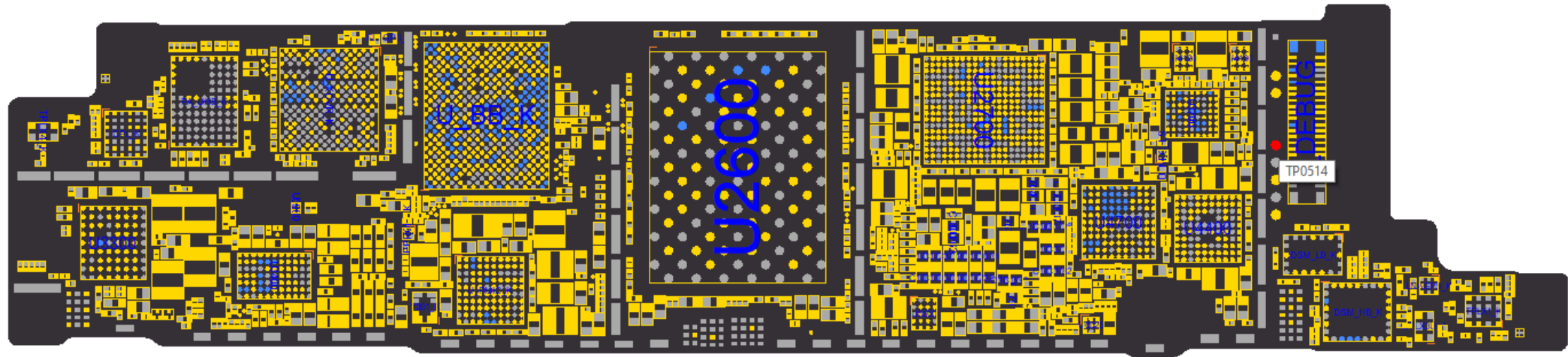
TP0714
VCC 1.8V



Force DFU iPhone XR (TP0514)



Force DFU iPhone XR (TP0514)

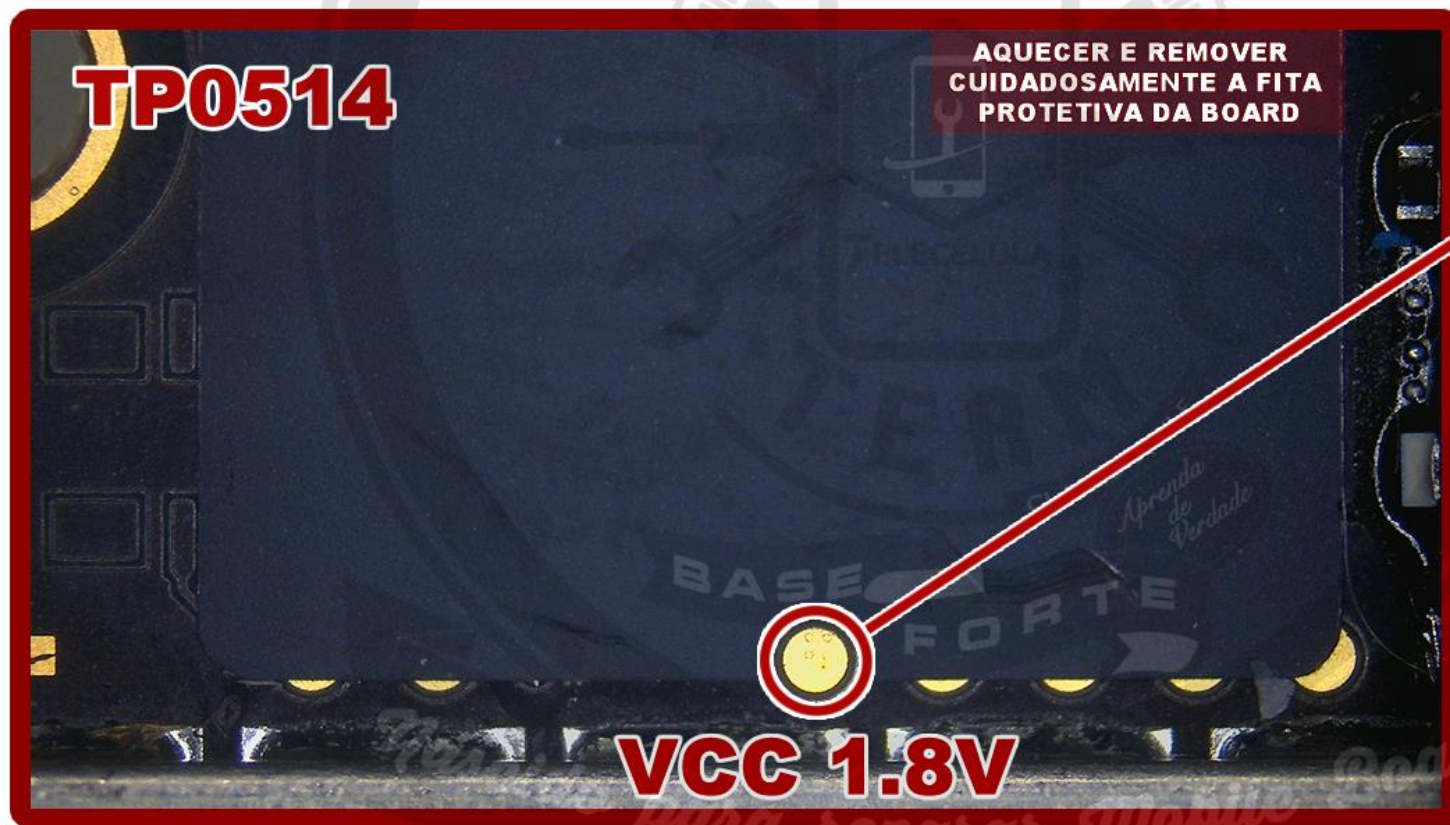


APPLE IPHONE XR

FORCE DFU



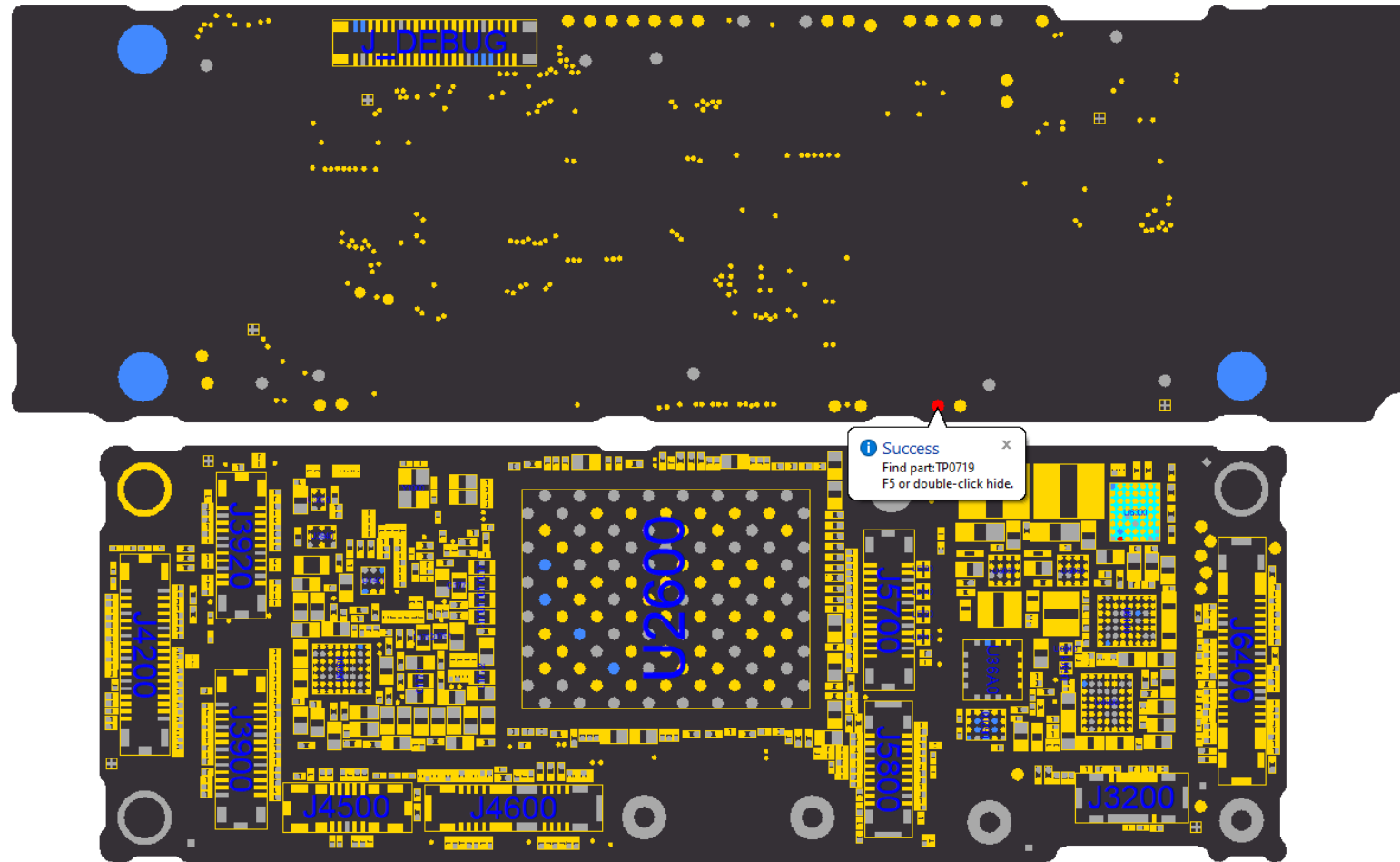
820-01209A



Force DFU iPhone 11

						X	UAF
						X	UAF
						X	UAF
串行接口 CPU到附件控制芯片发送数据			UART AP TO ACCESSORY TXD				U1000-BC65
串行接口 CPU到附件控制芯片接收数据			UART AP FROM ACCESSORY RXD				U1000-BA64
附件到CPU强制 DFU	PP05340	1	HYDRA TO AP FORCE DFU				U1000-AH64
DFU状态 信息	PP05330	1	DFU_STATUS				U1000-AD66
电源到CPU的开机键信号			PMU TO AP BUTTON POWER KEY L				CF66
电源到CPU的音量减按键信号			PMU TO AP BUTTON VOL DOWN L				CB64
			MTR_RREF_P	片内监视器参考电阻正相			U1000-CB3
			MTR_RREF_N	片内监视器参考电阻负相			U1000-CB2
I2S总线CPU到音频编解码器的主时钟1			I2S AP TO CODEC MCLK1				U1000-CM63
I2S总线CPU到音频编解码器音频串口3的位时钟			I2S AP TO CODEC ASP3 BCLK				U1000-BG4
I2S总线CPU到音频编解码器音频串口3的帧时钟			I2S AP TO CODEC ASP3 LRCLK				U1000-BL3
I2S总线CPU到音频编解码器音频串口3的数据输入			I2S CODEC ASP3 TO AP DIN				U1000-BJ4
I2S总线CPU到音频编解码器音频串口3的数据输出			I2S AP TO CODEC ASP3 DOUT				U1000-BL2

Force DFU iPhone 11



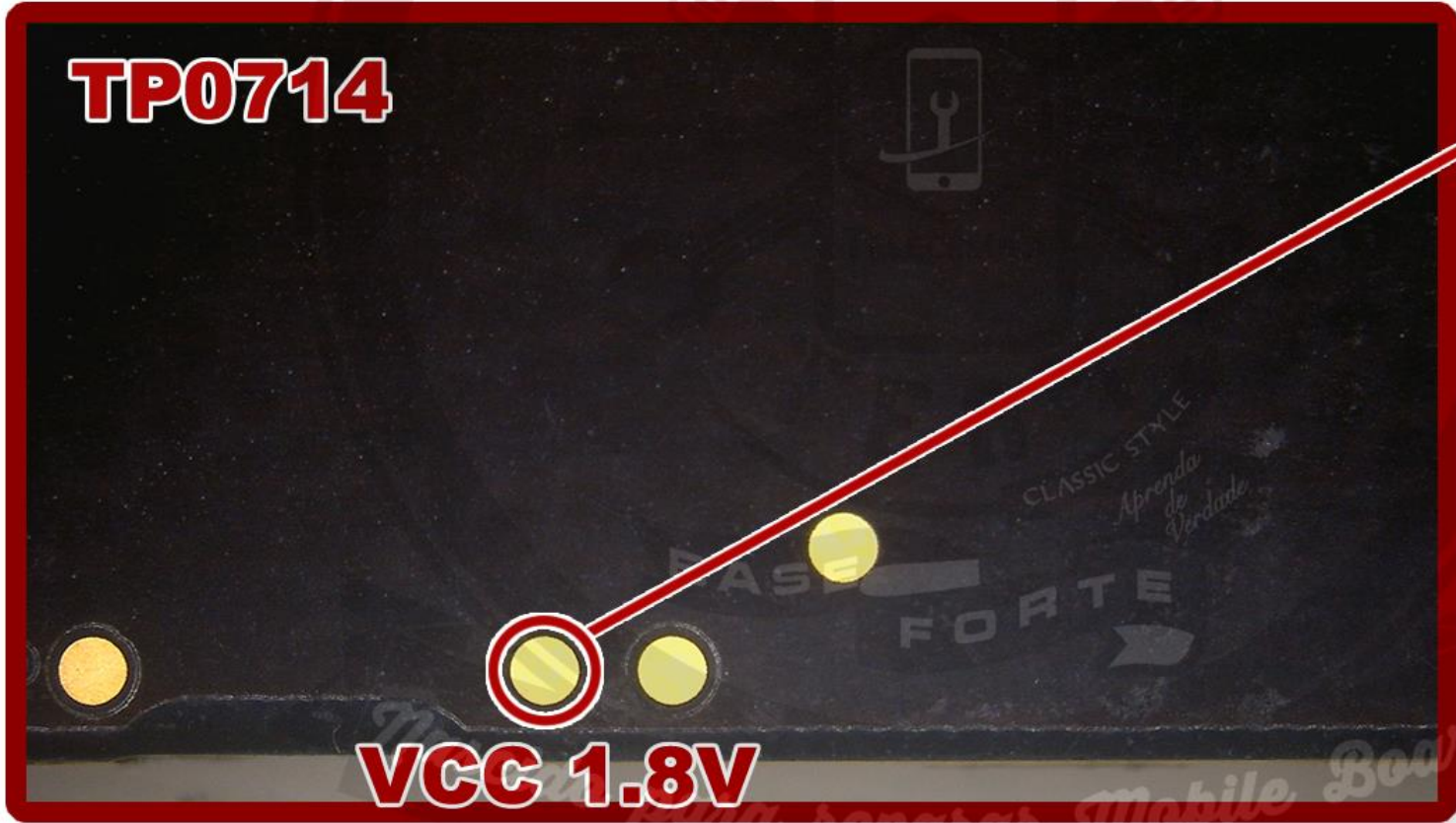
APPLE IPHONE 11

FORCE DFU



820-01523-A

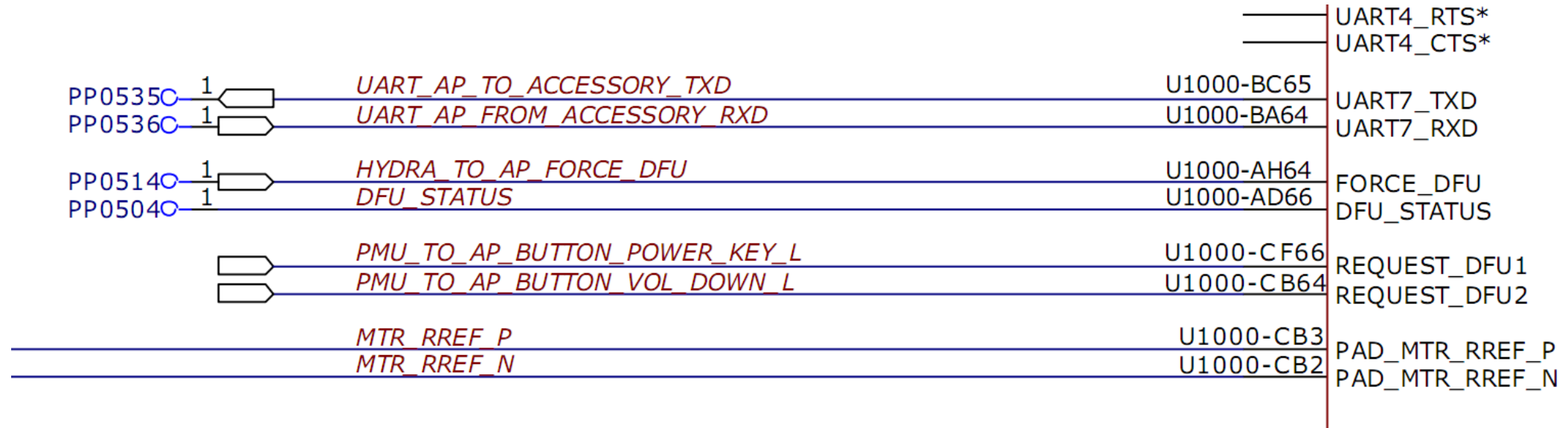
820-01525-A



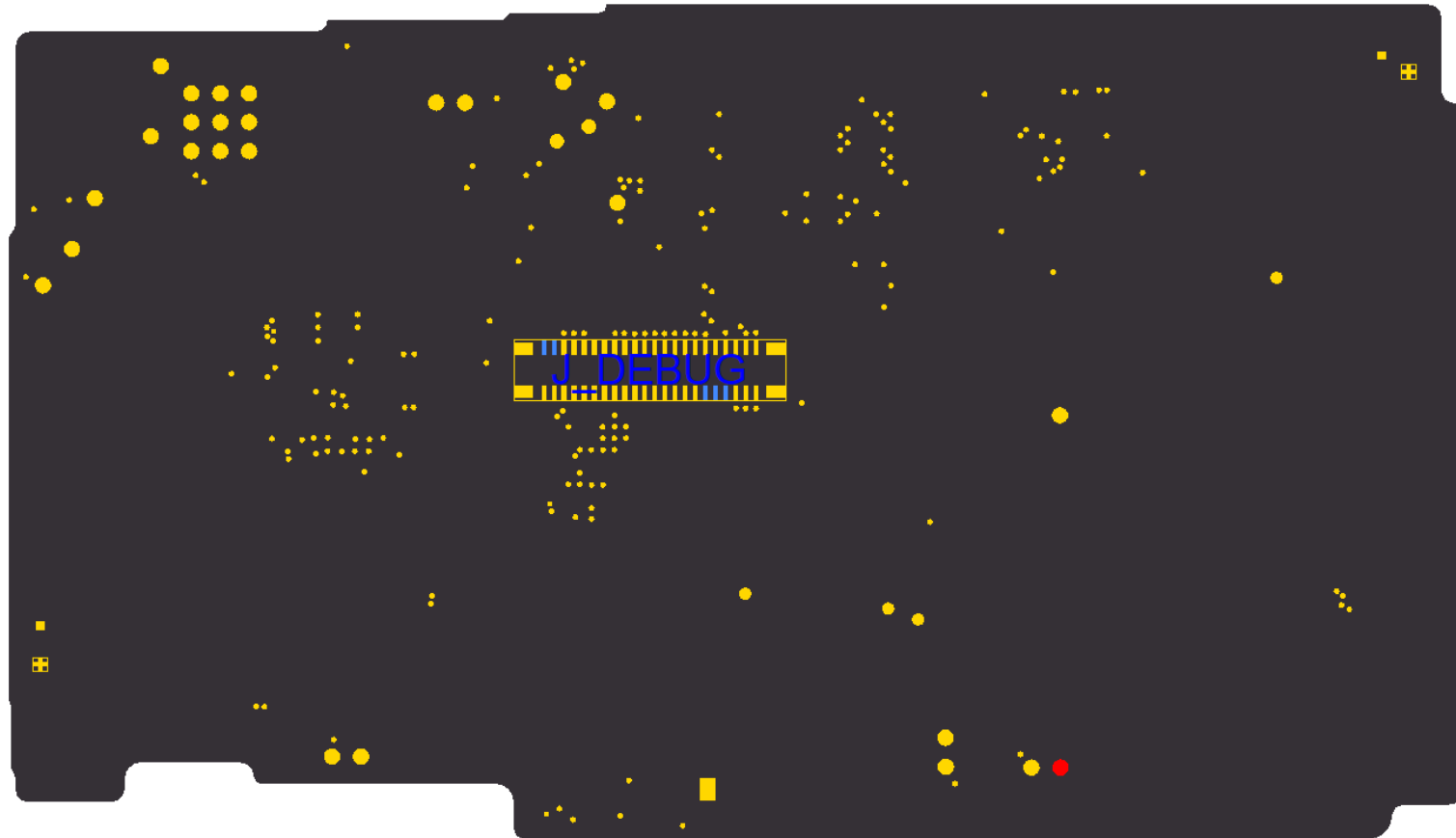
TP0714

VCC 1.8V

Force DFU iPhone 11 PRO



Force DFU iPhone 11 PRO



APPLE IPHONE 11 PRO

FORCE DFU

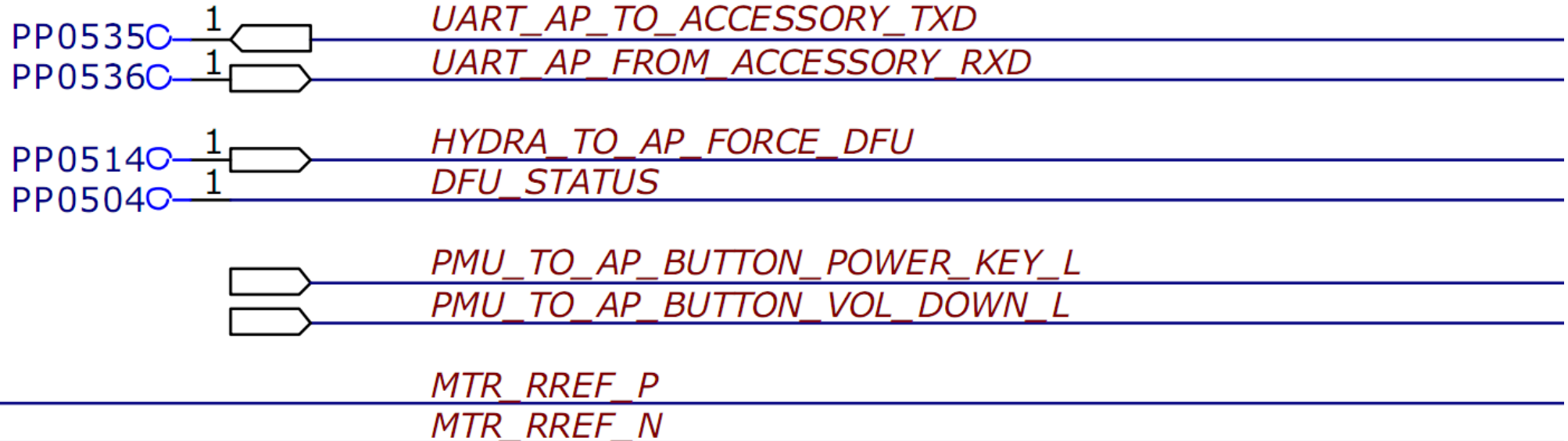


PP0514

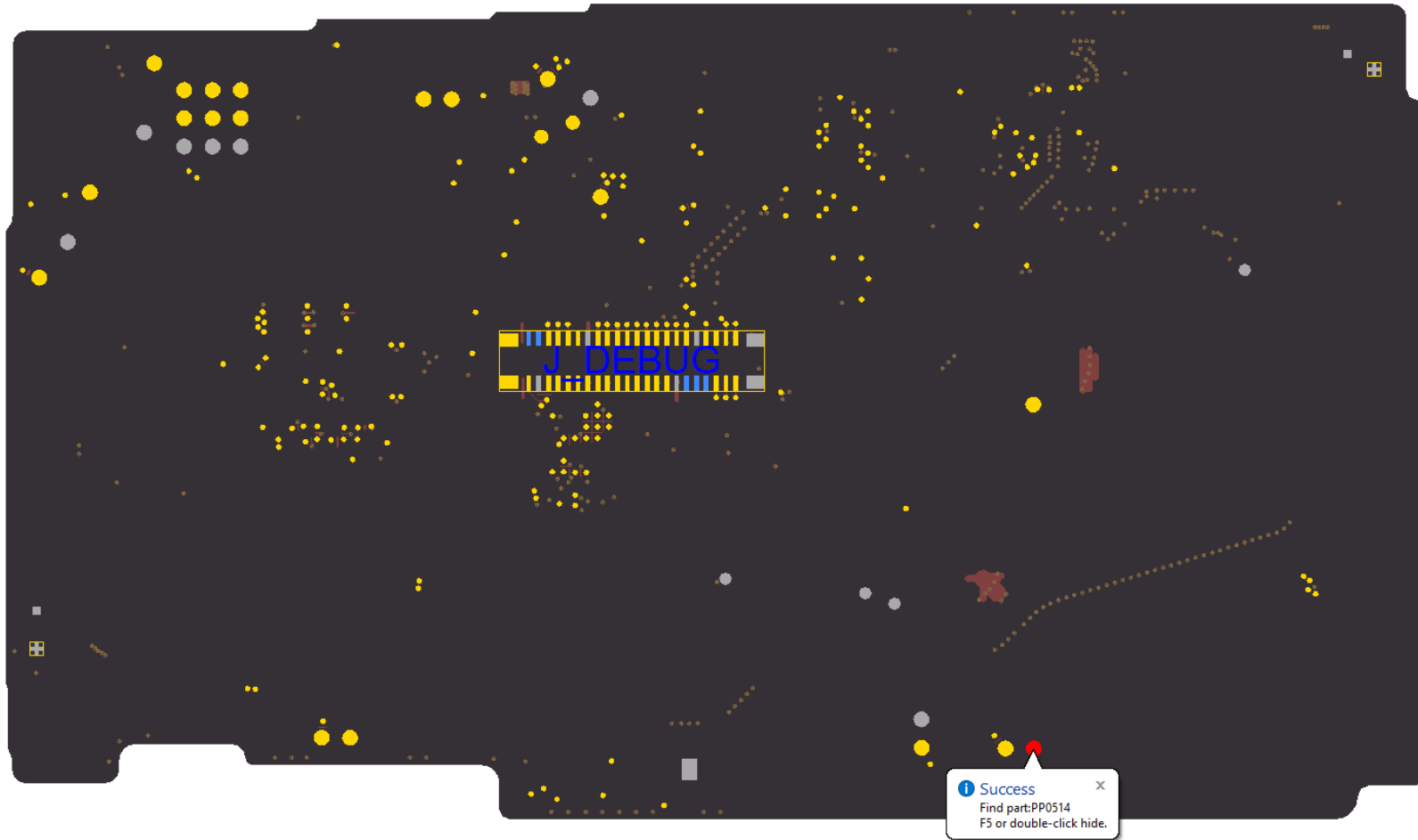
VCC 1.8V

Nascido para reparar Mobile Board

Force DFU iPhone 11 PRO MAX



Force DFU iPhone 11 PRO MAX



APPLE IPHONE 11 PRO MAX

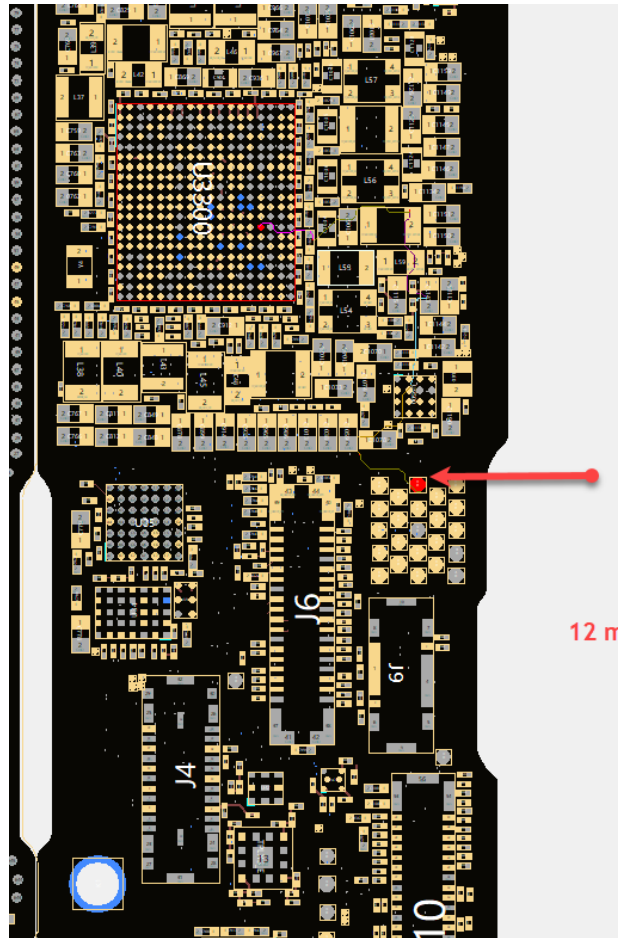
FORCE DFU



820-01682-08



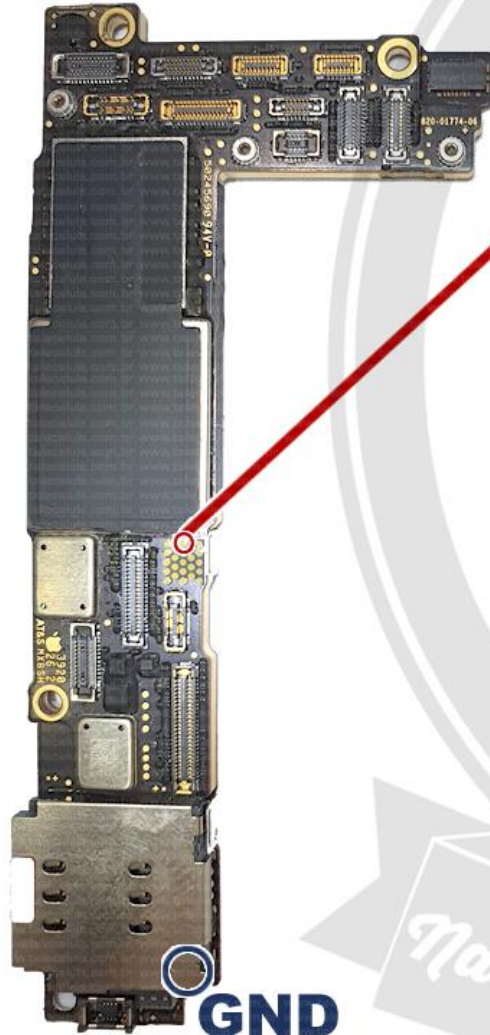
Force DFU iPhone 12 MINI



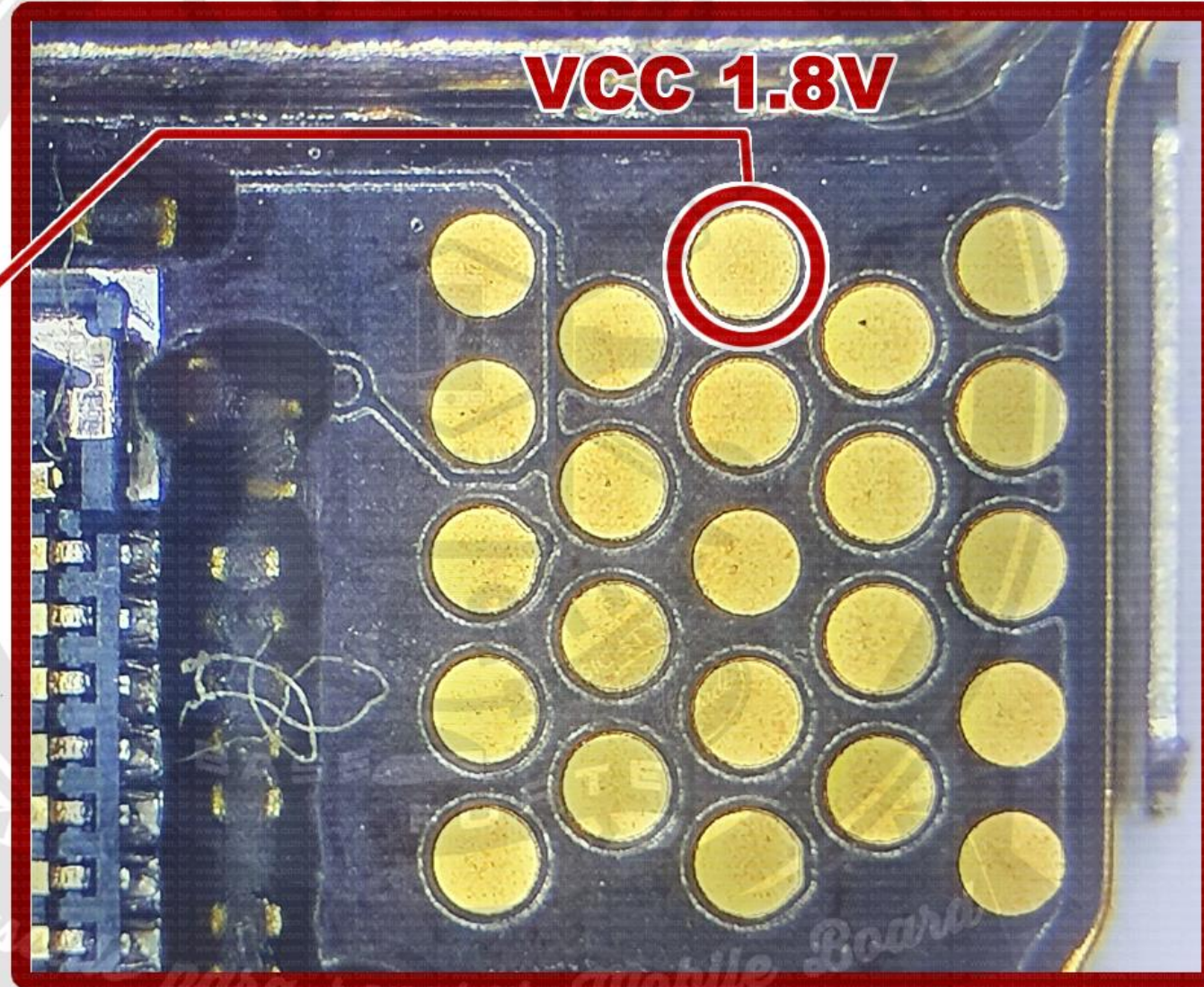
APPLE IPHONE 12 MINI

CONECTOR BOARD 820-01774-06 PLACA SEM BATERIA SEM ACESSÓRIOS/DISPOSITIVOS

FORCE DFU

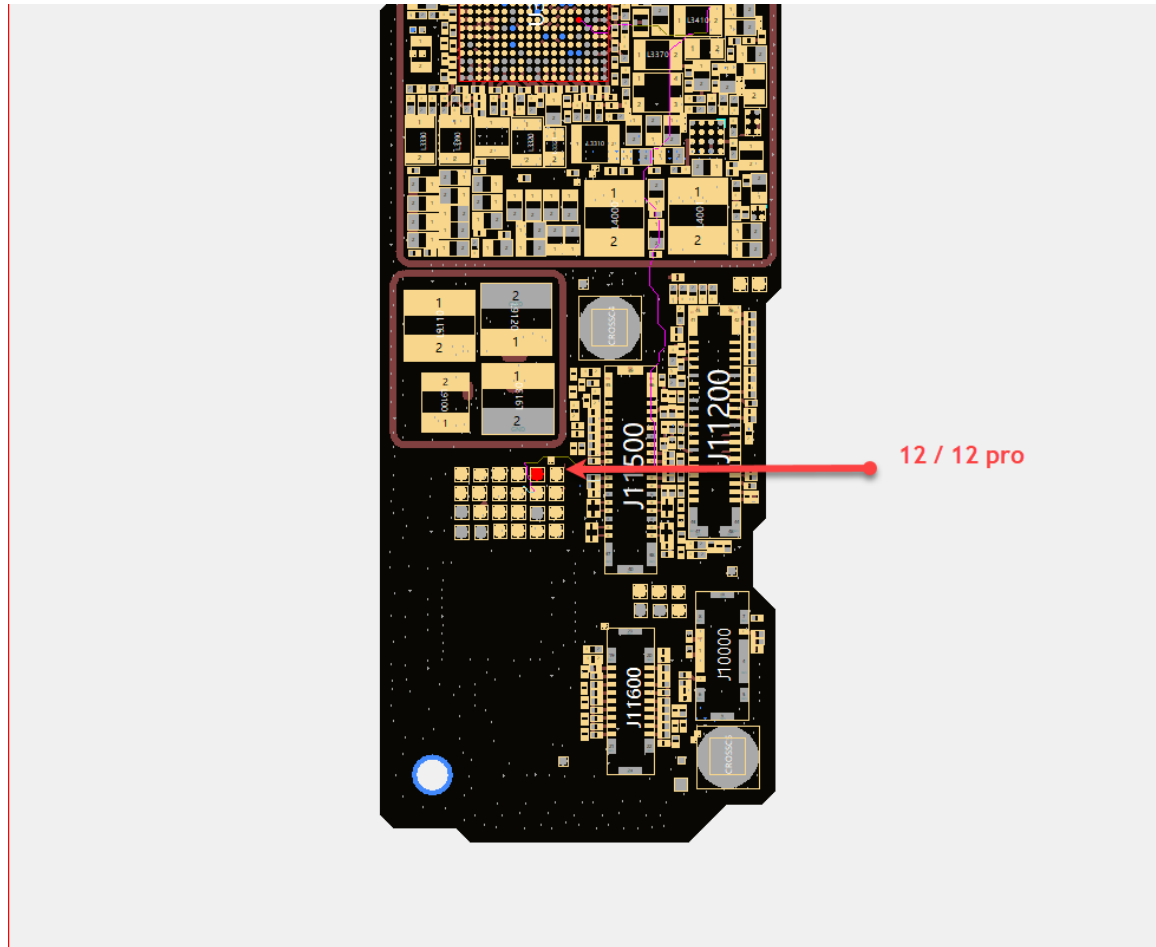


GND



VCC 1.8V

Force DFU iPhone 12, iPhone 12 Pro



65	<u>ANALOG_VDD_MAIN_OV_R</u>	TP12675 1 A TP-P55 ROOM=TEST
23	8 <u>IO_SOC_FROM_PMU_KRAKEN_FORCE_DFU</u>	TP12680 1 A TP-P55 ROOM=TEST
7		

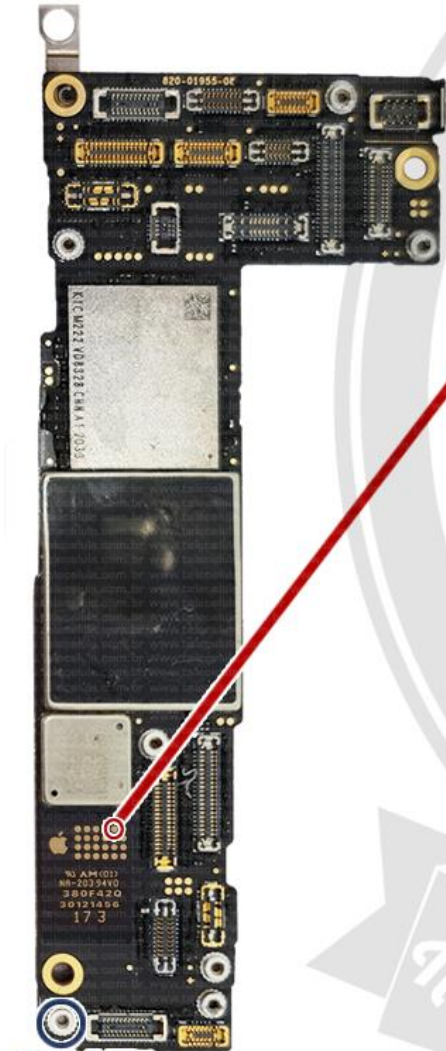
APPLE IPHONE 12 / 12 PRO

CONECTOR BOARD 820-01970-09 PLACA SEM BATERIA SEM ACESSÓRIOS/DISPOSITIVOS

FORCE DFU



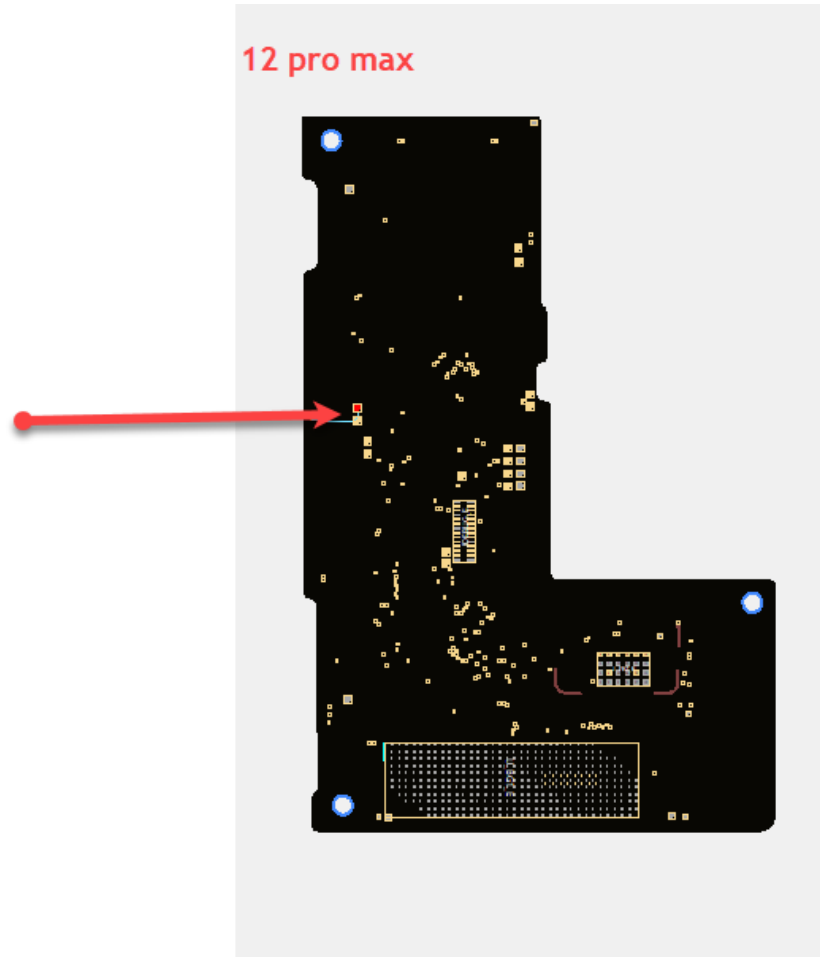
TELECÉLULA
SMARTCURU
LOCALIZADOR DE FALHAS



GND



Force DFU iPhone 12 Pro Max



DFU

14 IO_SOC_FROM_PMU_KRAKEN_FORCE_DFU

TP12680
1 A
TP-P55
ROOM=TEST

Power/GND

APPLE IPHONE 12 PRO MAX

PADS BOARD 820-01940-11 PLACA SEM BATERIA SEM ACESSÓRIOS/DISPOSITIVOS

FORCE DFU

